

Product datasheet for **AP14743PU-N**

CYP1B1 Rabbit Polyclonal Antibody

Product data:

| | |
|-----------------------|--|
| Product Type: | Primary Antibodies |
| Applications: | WB |
| Recommended Dilution: | ELISA: 1/1,000. Western blotting: 1/50 - 1/100. |
| Reactivity: | Human |
| Host: | Rabbit |
| Isotype: | Ig |
| Clonality: | Polyclonal |
| Immunogen: | This antibody is generated from rabbits immunized with a KLH conjugated synthetic peptide selected from the Center region of human CYP1B1. |
| Specificity: | This antibody reacts to CYP1B1. |
| Formulation: | PBS with 0.09% (W/V) sodium azide State: Purified State: Liquid purified Ig |
| Concentration: | lot specific |
| Purification: | Prepared by Saturated Ammonium Sulfate (SAS) precipitation followed by dialysis against PBS |
| Conjugation: | Unconjugated |
| Storage: | Store the antibody undiluted at 2-8°C for one month or (in aliquots) at -20°C for longer. Avoid repeated freezing and thawing. |
| Stability: | Shelf life: one year from despatch. |
| Gene Name: | cytochrome P450 family 1 subfamily B member 1 |
| Database Link: | Entrez Gene 1545 Human Q16678 |



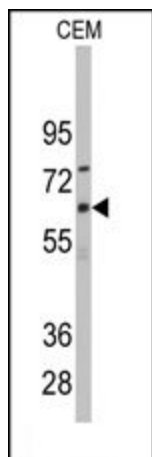
[View online »](#)

Background:

CYP1B1 is a member of the cytochrome P450 superfamily of enzymes. The cytochrome P450 proteins are monooxygenases which catalyze many reactions involved in drug metabolism and synthesis of cholesterol, steroids and other lipids. The enzyme localizes to the endoplasmic reticulum and metabolizes procarcinogens such as polycyclic aromatic hydrocarbons and 17beta-estradiol. Mutations in CYP1B1 gene have been associated with primary congenital glaucoma; therefore it is thought that the enzyme also metabolizes a signaling molecule involved in eye development, possibly a steroid.

Synonyms:

Cytochrome P450 1B1, CYPIB1

Product images:

Western blot analysis of anti-CYP1B1 Antibody (Center) in CEM cell line lysates (35ug/lane). CYP1B1 (arrow) was detected using the purified Pab.