

Product datasheet for **AP14742PU-N**

CYPIVF8 (CYP4F8) (C-term) Rabbit Polyclonal Antibody

Product data:

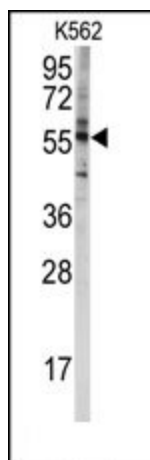
Product Type:	Primary Antibodies
Applications:	WB
Recommended Dilution:	ELISA: 1/1,000. Western blotting: 1/50 - 1/100.
Reactivity:	Human
Host:	Rabbit
Isotype:	Ig
Clonality:	Polyclonal
Immunogen:	This antibody is generated from rabbits immunized with a KLH conjugated synthetic peptide selected from the C-terminal region of human CYP4F8.
Specificity:	This antibody reacts to CYP4F8.
Formulation:	PBS with 0.09% (W/V) sodium azide State: Purified State: Liquid purified Ig
Concentration:	lot specific
Purification:	Prepared by Saturated Ammonium Sulfate (SAS) precipitation followed by dialysis against PBS
Conjugation:	Unconjugated
Storage:	Store the antibody undiluted at 2-8°C for one month or (in aliquots) at -20°C for longer. Avoid repeated freezing and thawing.
Stability:	Shelf life: one year from despatch.
Gene Name:	cytochrome P450 family 4 subfamily F member 8
Database Link:	Entrez Gene 11283 Human P98187
Background:	CYP4F8 is a member of the cytochrome P450 superfamily of enzymes. The cytochrome P450 proteins are monooxygenases which catalyze many reactions involved in drug metabolism and synthesis of cholesterol, steroids and other lipids. This protein localizes to the endoplasmic reticulum and functions as a 19-hydroxylase of prostaglandins in seminal vesicles.



[View online »](#)

Synonyms: Cytochrome P450 4F8, CYPIVF8

Product images:



Western blot analysis of anti-CYP4F8 Antibody (C-term) in K562 cell line lysates (35ug/lane). CYP4F8 (arrow) was detected using the purified Pab.