

Product datasheet for **AP14735PU-N**

Cytochrome P450 4A (CYP4A11) Rabbit Polyclonal Antibody

Product data:

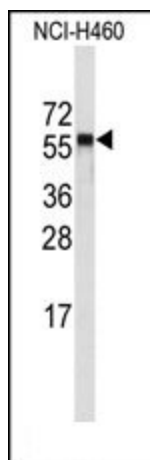
Product Type:	Primary Antibodies
Applications:	WB
Recommended Dilution:	ELISA: 1/1,000. Western blotting: 1/50 - 1/100.
Reactivity:	Human
Host:	Rabbit
Isotype:	Ig
Clonality:	Polyclonal
Immunogen:	This antibody is generated from rabbits immunized with a KLH conjugated synthetic peptide selected from the C-terminal region of human CYP4A11.
Specificity:	This antibody reacts to CYP4A11.
Formulation:	PBS with 0.09% (W/V) sodium azide State: Purified State: Liquid purified Ig
Concentration:	lot specific
Purification:	Prepared by Saturated Ammonium Sulfate (SAS) precipitation followed by dialysis against PBS
Conjugation:	Unconjugated
Storage:	Store the antibody undiluted at 2-8°C for one month or (in aliquots) at -20°C for longer. Avoid repeated freezing and thawing.
Stability:	Shelf life: one year from despatch.
Gene Name:	cytochrome P450 family 4 subfamily A member 11
Database Link:	Entrez Gene 1579 Human Q02928
Background:	CYP4A11 is a member of the cytochrome P450 superfamily of enzymes. The cytochrome P450 proteins are monooxygenases which catalyze many reactions involved in drug metabolism and synthesis of cholesterol, steroids and other lipids. This protein localizes to the endoplasmic reticulum and hydroxylates medium-chain fatty acids such as laurate and myristate.



[View online »](#)

Synonyms: CYP4A2, Cytochrome P450 4A11, CYPIVA11, CYP4AII, Cytochrome P-450 HK omega

Product images:



Western blot analysis of anti-CYP4A11 Antibody (C-term) in NCI-H460 cell line lysates (35ug/lane). CYP4A11 (arrow) was detected using the purified Pab.