

## Product datasheet for **AP14727PU-N**

### **Bcl rambo (BCL2L13) (C-term) Rabbit Polyclonal Antibody**

#### **Product data:**

<b>Product Type:</b>	Primary Antibodies
<b>Applications:</b>	WB
<b>Recommended Dilution:</b>	ELISA: 1/1,000. Western blotting: 1/50 - 1/100.
<b>Reactivity:</b>	Human
<b>Host:</b>	Rabbit
<b>Isotype:</b>	Ig
<b>Clonality:</b>	Polyclonal
<b>Immunogen:</b>	This antibody is generated from rabbits immunized with a KLH conjugated synthetic peptide selected from the C-terminal region of human BCL2L13.
<b>Specificity:</b>	This antibody reacts to BCL2L13.
<b>Formulation:</b>	PBS with 0.09% (W/V) sodium azide State: Purified State: Liquid purified Ig
<b>Concentration:</b>	lot specific
<b>Purification:</b>	Prepared by Saturated Ammonium Sulfate (SAS) precipitation followed by dialysis against PBS
<b>Conjugation:</b>	Unconjugated
<b>Storage:</b>	Store the antibody undiluted at 2-8°C for one month or (in aliquots) at -20°C for longer. Avoid repeated freezing and thawing.
<b>Stability:</b>	Shelf life: one year from despatch.
<b>Gene Name:</b>	BCL2 like 13
<b>Database Link:</b>	<a href="#">Entrez Gene 23786 Human</a> <a href="#">Q9BXK5</a>



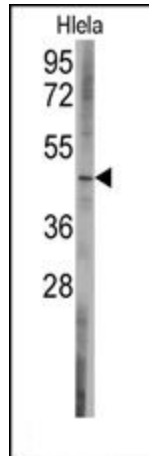
[View online »](#)

**Background:**

Bcl rambo shares common structural characteristics with other members of the anti-apoptotic Bcl2 family members, but differs from them at its C-terminus, where a 250 amino acid sequence precedes the membrane anchor region. It also differs from other pro-apoptotic Bcl-2 family members in that its membrane anchor C-terminus region is responsible for its apoptotic activity, not its Bcl-2 homology motifs. Bcl rambo may promote the activation of caspase-3 and apoptosis.

**Synonyms:**

Bcl2-L-13, BCL2L13, MIL1, CD003, Bcl-2-like protein 13, Bcl-rambo

**Product images:**

Western blot analysis of anti-BCL2L13 Antibody (C-term) in HeLa cell line lysates (35ug/lane). BCL2L13 (arrow) was detected using the purified Pab.