

Product datasheet for **AP14716PU-N**

AMPD3 Rabbit Polyclonal Antibody

Product data:

Product Type:	Primary Antibodies
Applications:	WB
Recommended Dilution:	ELISA: 1/1,000. Western blot: 1/50-1/100.
Reactivity:	Human, Mouse
Host:	Rabbit
Isotype:	Ig
Clonality:	Polyclonal
Immunogen:	This antibody is generated from rabbits immunized with a KLH conjugated synthetic peptide selected from the Center region of human AMPD3.
Specificity:	This antibody detects AMPD3 at Center.
Formulation:	PBS with 0.09% (W/V) Sodium Azide as preservative State: Purified State: Liquid purified Ig fraction.
Concentration:	lot specific
Purification:	Prepared by Saturated Ammonium Sulfate (SAS) precipitation followed by dialysis against PBS
Conjugation:	Unconjugated
Storage:	Store the antibody undiluted at 2-8°C for one month or (in aliquots) at -20°C for longer. Avoid repeated freezing and thawing.
Stability:	Shelf life: one year from despatch.
Gene Name:	adenosine monophosphate deaminase 3
Database Link:	Entrez Gene 272 Human Q01432



[View online »](#)

Background:

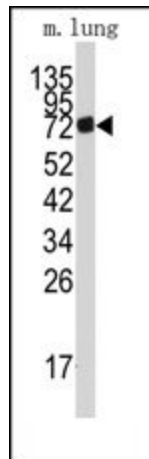
AMPD3 is a member of the AMP deaminase gene family. This protein is a highly regulated enzyme that catalyzes the hydrolytic deamination of adenosine monophosphate to inosine monophosphate, a branch point in the adenylate catabolic pathway. The protein is the erythrocyte (E) isoforms, whereas other family members isoforms predominate in muscle (M) and liver (L) cells. Mutations in this gene lead to the clinically asymptomatic, autosomal recessive condition erythrocyte AMP deaminase deficiency.

Synonyms:

AMPD3

Note:

Calculated Molecular weight: 88812 Da

Product images:

Western blot analysis of anti-AMPD3 Antibody (Center) in mouse lung tissue lysates (35ug/lane). AMPD3 (arrow) was detected using the purified Pab.