

Product datasheet for **AP14715PU-N**

FKBP1B (N-term) Rabbit Polyclonal Antibody

Product data:

Product Type:	Primary Antibodies
Applications:	WB
Recommended Dilution:	ELISA: 1/1,000. Western blotting: 1/50-1/100.
Reactivity:	Human, Mouse
Host:	Rabbit
Isotype:	Ig
Clonality:	Polyclonal
Immunogen:	KLH conjugated synthetic peptide between 1~30 amino acids from the N-terminal region of Human FKBP1B.
Specificity:	This antibody recognizes FKBP1B.
Formulation:	PBS with 0.09% (W/V) Sodium Azide State: Purified State: Liquid purified Ig fraction
Concentration:	lot specific
Purification:	Prepared by Saturated Ammonium Sulfate (SAS) precipitation followed by dialysis against PBS
Conjugation:	Unconjugated
Storage:	Store the antibody undiluted at 2-8°C for one month or (in aliquots) at -20°C for longer. Avoid repeated freezing and thawing.
Stability:	Shelf life: one year from despatch.
Gene Name:	FK506 binding protein 1B
Database Link:	Entrez Gene 2281 Human P68106
Background:	FKBP1B is a member of the immunophilin protein family, which play a role in immunoregulation and basic cellular processes involving protein folding and trafficking. This protein is a cis-trans prolyl isomerase that binds the immunosuppressants FK506 and rapamycin. The protein is highly similar to the FK506-binding protein 1A. Its physiological role is thought to be in excitation-contraction coupling in cardiac muscle.

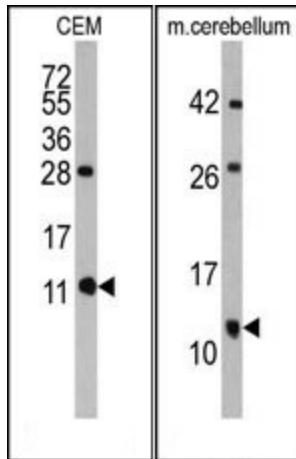


[View online »](#)

Synonyms: FKBP12.6, FKBP1L, OTK4, PPIase FKBP1B, FK506-binding protein 1B, Rotamase, Immunophilin FKBP12.6, h-FKBP-12

Note: Calculated Molecular Weight: 11783 Da

Product images:



LEFT: Western blot analysis of anti-FKBP1B Antibody (N-term) in CEM cell line lysates (35 ug/lane). FKBP1B (arrow) was detected using the purified Pab. RIGHT: Western blot analysis of anti-FKBP1B Antibody (N-term) in Mouse cerebellum tissue lysates (35 ug/lane). FKBP1B (arrow) was detected using the purified Pab.