

Product datasheet for **AP14709PU-N**

COPS3 (Center) Rabbit Polyclonal Antibody

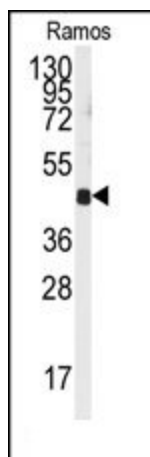
Product data:

Product Type:	Primary Antibodies
Applications:	WB
Recommended Dilution:	ELISA: 1/1,000. Western blotting: 1/50 - 1/100.
Reactivity:	Human
Host:	Rabbit
Isotype:	Ig
Clonality:	Polyclonal
Immunogen:	This antibody is generated from rabbits immunized with a KLH conjugated synthetic peptide selected from the Center region of human COPS3.
Specificity:	This antibody to COPS3.
Formulation:	PBS with 0.09% (W/V) sodium azide State: Purified State: Liquid purified Ig
Concentration:	lot specific
Purification:	Prepared by Saturated Ammonium Sulfate (SAS) precipitation followed by dialysis against PBS
Conjugation:	Unconjugated
Storage:	Store the antibody undiluted at 2-8°C for one month or (in aliquots) at -20°C for longer. Avoid repeated freezing and thawing.
Stability:	Shelf life: one year from despatch.
Gene Name:	COP9 signalosome subunit 3
Database Link:	Entrez Gene 8533 Human Q9UNS2
Background:	COPS3 possesses kinase activity that phosphorylates regulators involved in signal transduction. This protein phosphorylates I kappa-Balpha, p105, and c-Jun. It acts as a docking site for complex-mediated phosphorylation.
Synonyms:	Signalosome subunit 3, SGN3, CSN3



[View online »](#)

Product images:



Western blot analysis of anti-COPS3 Antibody (Center) in Ramos cell line lysates (35ug/lane). COPS3 (arrow) was detected using the purified Pab.