

Product datasheet for **AP14704PU-N**

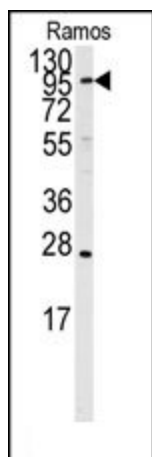
ARTS1 (ERAP1) Rabbit Polyclonal Antibody

Product data:

Product Type:	Primary Antibodies
Applications:	WB
Recommended Dilution:	ELISA: 1/1,000 Western blotting: 1/50 - 1/100.
Reactivity:	Human
Host:	Rabbit
Isotype:	Ig
Clonality:	Polyclonal
Immunogen:	This antibody is generated from rabbits immunized with a KLH conjugated synthetic peptide selected from the Center region of human ARTS1.
Specificity:	This antibody reacts to ARTS1.
Formulation:	PBS with 0.09% (W/V) sodium azide State: Purified State: Liquid purified Ig
Concentration:	lot specific
Purification:	Prepared by Saturated Ammonium Sulfate (SAS) precipitation followed by dialysis against PBS
Conjugation:	Unconjugated
Storage:	Store the antibody undiluted at 2-8°C for one month or (in aliquots) at -20°C for longer. Avoid repeated freezing and thawing.
Stability:	Shelf life: one year from despatch.
Gene Name:	endoplasmic reticulum aminopeptidase 1
Database Link:	Entrez Gene 51752 Human Q9NZ08
Background:	Aminopeptidases play a role in the metabolism of several peptides that may be involved in blood pressure and the pathogenesis of essential hypertension. Adipocyte-derived leucine aminopeptidase (ALAP) is a member of the M1 family of zinc metallopeptidases.
Synonyms:	APPILS, KIAA0525, Aminopeptidase PILS, ARTS-1



[View online »](#)

Product images:

Western blot analysis of anti-ARTS1 Antibody (Center) in Ramos cell line lysates (35ug/lane). ARTS1 (arrow) was detected using the purified Pab.