

## Product datasheet for **AP14689PU-N**

### **ALDH9A1 (C-term) Rabbit Polyclonal Antibody**

#### **Product data:**

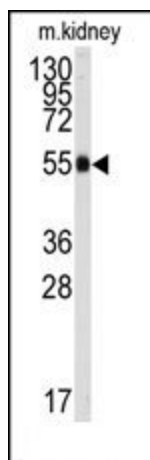
<b>Product Type:</b>	Primary Antibodies
<b>Applications:</b>	IHC, WB
<b>Recommended Dilution:</b>	ELISA: 1/1,000. Western blotting: 1/50 - 1/100. Immunohistochemistry: 1/10 - 1/50.
<b>Reactivity:</b>	Human, Mouse
<b>Host:</b>	Rabbit
<b>Isotype:</b>	Ig
<b>Clonality:</b>	Polyclonal
<b>Immunogen:</b>	This antibody is generated from rabbits immunized with a KLH conjugated synthetic peptide selected from the C-terminal region of human ALDH9A1.
<b>Specificity:</b>	This antibody reacts to ALDH9A1.
<b>Formulation:</b>	PBS with 0.09% (W/V) sodium azide State: Purified State: Liquid purified Ig
<b>Concentration:</b>	lot specific
<b>Purification:</b>	Prepared by Saturated Ammonium Sulfate (SAS) precipitation followed by dialysis against PBS
<b>Conjugation:</b>	Unconjugated
<b>Storage:</b>	Store the antibody undiluted at 2-8°C for one month or (in aliquots) at -20°C for longer. Avoid repeated freezing and thawing.
<b>Stability:</b>	Shelf life: one year from despatch.
<b>Gene Name:</b>	aldehyde dehydrogenase 9 family member A1
<b>Database Link:</b>	<a href="#">Entrez Gene 223 Human P49189</a>
<b>Background:</b>	ALDH9A1 belongs to the aldehyde dehydrogenase family of proteins. The protein has a high activity for oxidation of gamma-aminobutyraldehyde and other amino aldehydes. The enzyme catalyzes the dehydrogenation of gamma-aminobutyraldehyde to gamma-aminobutyric acid (GABA). This isozyme is a tetramer of identical 54-kD subunits.



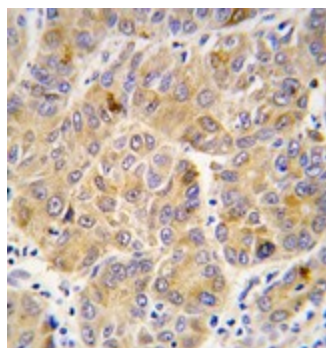
[View online »](#)

Synonyms: TMABADH

### Product images:



Western blot analysis of anti-ALDH9A1 Antibody (C-term) in mouse kidney tissue lysates (35ug/lane). ALDH9A1 (arrow) was detected using the purified Pab.



Formalin-fixed and paraffin-embedded human hepatocarcinoma tissue reacted with ALDH9A1 antibody (C-term), which was peroxidase-conjugated to the secondary antibody, followed by DAB staining.