

Product datasheet for **AP14688PU-N**

ALDH9A1 (N-term) Rabbit Polyclonal Antibody

Product data:

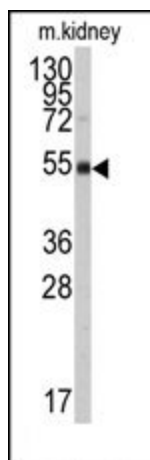
Product Type:	Primary Antibodies
Applications:	IHC, WB
Recommended Dilution:	ELISA: 1/1000. Western blotting: 1/1000. Immunohistochemistry: 1/10-1/50.
Reactivity:	Human, Mouse
Host:	Rabbit
Isotype:	Ig
Clonality:	Polyclonal
Immunogen:	KLH conjugated synthetic peptide between 4-34 amino acids from the N-terminal region of Human ALDH9A1.
Specificity:	This antibody reacts to ALDH9A1.
Formulation:	PBS with 0.09% (W/V) Sodium Azide State: Purified State: Liquid purified Ig fraction
Concentration:	lot specific
Purification:	Prepared by Saturated Ammonium Sulfate (SAS) precipitation followed by dialysis against PBS
Conjugation:	Unconjugated
Storage:	Store the antibody undiluted at 2-8°C for one month or (in aliquots) at -20°C for longer. Avoid repeated freezing and thawing.
Stability:	Shelf life: one year from despatch.
Gene Name:	aldehyde dehydrogenase 9 family member A1
Database Link:	Entrez Gene 223 Human P49189
Background:	ALDH9A1 belongs to the aldehyde dehydrogenase family of proteins. The protein has a high activity for oxidation of gamma-aminobutyraldehyde and other amino aldehydes. The enzyme catalyzes the dehydrogenation of gamma-aminobutyraldehyde to gamma-aminobutyric acid (GABA). This isozyme is a tetramer of identical 54-kD subunits.



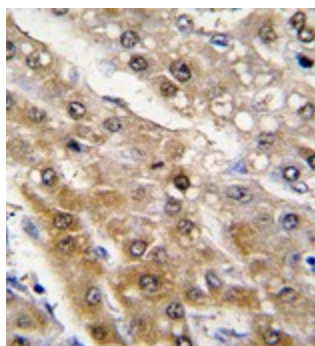
[View online »](#)

Synonyms: TMABADH

Product images:



Western blot analysis of anti-ALDH9A1 Antibody (N-term) in mouse kidney tissue lysates (35ug/lane). ALDH9A1 (arrow) was detected using the purified Pab.



Formalin-fixed and paraffin-embedded human hepatocarcinoma tissue reacted with ALDH9A1 antibody (N-term), which was peroxidase-conjugated to the secondary antibody, followed by DAB staining.