

Product datasheet for **AP14687PU-N**

ALDH3A1 Rabbit Polyclonal Antibody

Product data:

Product Type:	Primary Antibodies
Applications:	IHC, WB
Recommended Dilution:	ELISA: 1/1,000. Western blotting: 1/50 - 1/100. Immunohistochemistry: 1/10 - 1/50.
Reactivity:	Human, Mouse
Host:	Rabbit
Isotype:	Ig
Clonality:	Polyclonal
Immunogen:	This antibody is generated from rabbits immunized with a KLH conjugated synthetic peptide selected from the Center region of human ALDH3A1.
Specificity:	This antibody reacts to ALDH3A1.
Formulation:	PBS with 0.09% (W/V) sodium azide State: Purified State: Liquid purified Ig
Concentration:	lot specific
Purification:	Prepared by Saturated Ammonium Sulfate (SAS) precipitation followed by dialysis against PBS
Conjugation:	Unconjugated
Storage:	Store the antibody undiluted at 2-8°C for one month or (in aliquots) at -20°C for longer. Avoid repeated freezing and thawing.
Stability:	Shelf life: one year from despatch.
Gene Name:	aldehyde dehydrogenase 3 family member A1
Database Link:	Entrez Gene 218 Human P30838



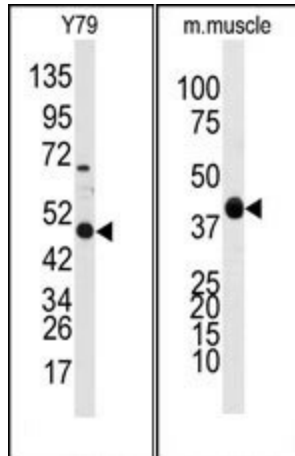
[View online »](#)

Background:

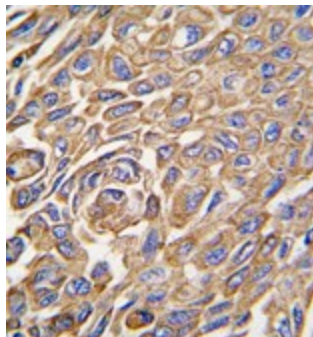
Aldehyde dehydrogenases oxidize various aldehydes to the corresponding acids. They are involved in the detoxification of alcohol-derived acetaldehyde and in the metabolism of corticosteroids, biogenic amines, neurotransmitters, and lipid peroxidation. ALDH3A1 forms a cytoplasmic homodimer that preferentially oxidizes aromatic and medium-chain (6 carbons or more) saturated and unsaturated aldehyde substrates. The enzyme is thought to promote resistance to UV and 4-hydroxy-2-nonenal-induced oxidative damage in the cornea.

Synonyms:

ALDH3A1, Aldehyde dehydrogenase 3, ALDHIII

Product images:


(LEFT)Western blot analysis of anti-ALDH3A1 Antibody (Center) in Y79 cell line lysates (35ug/lane). ALDH3A1 (arrow) was detected using the purified Pab. (RIGHT)Western blot analysis of anti-ALDH3A1 Antibody (Center) in mouse muscle tissue lysates (35ug/lane). ALDH3A1 (arrow) was detected using the purified Pab.



Formalin-fixed and paraffin-embedded human lung carcinoma tissue reacted with ALDH3A1 antibody (Center), which was peroxidase-conjugated to the secondary antibody, followed by DAB staining.