

Product datasheet for **AP14685PU-N**

ALDH1L1 (C-term) Rabbit Polyclonal Antibody

Product data:

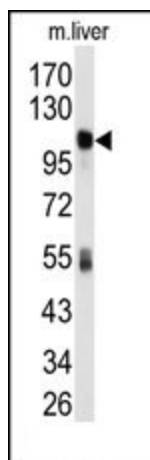
Product Type:	Primary Antibodies
Applications:	IHC, WB
Recommended Dilution:	ELISA: 1/1,000. Western blotting: 1/50-1/100. Immunohistochemistry: 1/50-1/100.
Reactivity:	Human, Mouse
Host:	Rabbit
Isotype:	Ig
Clonality:	Polyclonal
Immunogen:	This antibody is generated from rabbits immunized with a KLH conjugated synthetic peptide between 724~754 amino acids from the C-terminal region of Human ALDH1L1.
Specificity:	This antibody recognizes ALDH1L1.
Formulation:	PBS with 0.09% (W/V) Sodium Azide State: Purified State: Liquid purified Ig fraction
Concentration:	lot specific
Purification:	Prepared by Saturated Ammonium Sulfate (SAS) precipitation followed by dialysis against PBS
Conjugation:	Unconjugated
Storage:	Store the antibody undiluted at 2-8°C for one month or (in aliquots) at -20°C for longer. Avoid repeated freezing and thawing.
Stability:	Shelf life: one year from despatch.
Gene Name:	aldehyde dehydrogenase 1 family member L1
Database Link:	Entrez Gene 10840 Human O75891
Background:	ALDH1L1 catalyzes the conversion of 10-formyltetrahydrofolate, NADP, and water to tetrahydrofolate, NADPH, and carbon dioxide. The encoded protein belongs to the aldehyde dehydrogenase family and is responsible for formate oxidation in vivo. Deficiencies in this gene can result in an accumulation of formate and subsequent methanol poisoning.



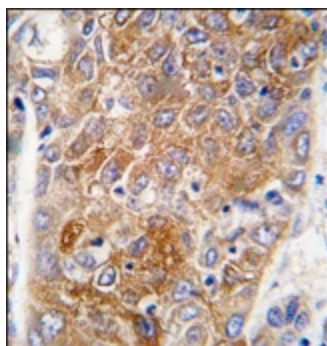
[View online »](#)

Synonyms: 10-formyltetrahydrofolate dehydrogenase

Product images:



Western blot analysis of ALDH1L1 Antibody (C-term) in Mouse liver tissue lysates (35ug/lane). ALDH1L1 (arrow) was detected using the purified Pab.



Formalin-fixed and paraffin-embedded human hepatocarcinoma tissue reacted with ALDH1L1 antibody (C-term), which was peroxidase-conjugated to the secondary antibody, followed by DAB staining.