

## Product datasheet for **AP14684PU-N**

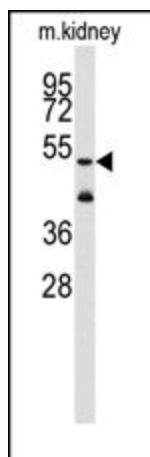
### ALDH1A3 (N-term) Rabbit Polyclonal Antibody

#### Product data:

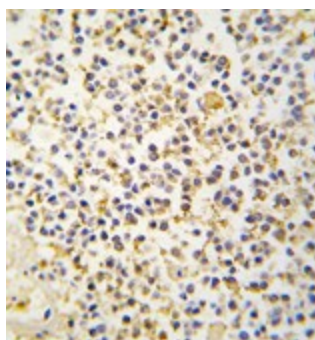
Product Type:	Primary Antibodies
Applications:	IHC, WB
Recommended Dilution:	ELISA: 1/1,000. Western blotting: 1/50 - 1/100. Immunohistochemistry: 1/10 - 1/50.
Reactivity:	Human, Mouse
Host:	Rabbit
Isotype:	Ig
Clonality:	Polyclonal
Immunogen:	This antibody is generated from rabbits immunized with a KLH conjugated synthetic peptide selected from the N-terminal region of human ALDH1A3.
Specificity:	This antibody reacts to ALDH1A3.
Formulation:	PBS with 0.09% (W/V) sodium azide State: Purified State: Liquid purified Ig
Concentration:	lot specific
Purification:	Prepared by Saturated Ammonium Sulfate (SAS) precipitation followed by dialysis against PBS
Conjugation:	Unconjugated
Storage:	Store the antibody undiluted at 2-8°C for one month or (in aliquots) at -20°C for longer. Avoid repeated freezing and thawing.
Stability:	Shelf life: one year from despatch.
Gene Name:	aldehyde dehydrogenase 1 family member A3
Database Link:	<a href="#">Entrez Gene 220 Human P47895</a>
Background:	Aldehyde dehydrogenase isozymes are thought to play a major role in the detoxification of aldehydes generated by alcohol metabolism and lipid peroxidation. The enzyme ALDH1A3 uses retinal as a substrate, either in a free or cellular retinol-binding protein form.
Synonyms:	Aldehyde dehydrogenase 6, Retinaldehyde dehydrogenase 3, RaLDH3



[View online »](#)

**Product images:**

Western blot analysis of anti-ALDH1A3 Antibody (N-term) in mouse kidney tissue lysates (35ug/lane). ALDH1A3 (arrow) was detected using the purified Pab.



Formalin-fixed and paraffin-embedded human kidney tissue reacted with ALDH1A3 antibody (N-term), which was peroxidase-conjugated to the secondary antibody, followed by DAB staining.