

## Product datasheet for **AP14678PU-N**

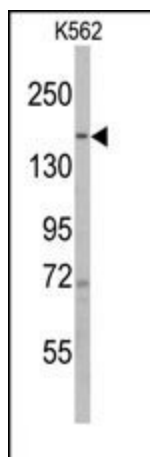
### PHLPP (PHLPP1) (N-term) Rabbit Polyclonal Antibody

#### Product data:

Product Type:	Primary Antibodies
Applications:	WB
Recommended Dilution:	ELISA: 1/1,000. Western blotting: 1/50 - 1/100.
Reactivity:	Human
Host:	Rabbit
Isotype:	Ig
Clonality:	Polyclonal
Immunogen:	This antibody is generated from rabbits immunized with a KLH conjugated synthetic peptide selected from the N-terminal region of human PHLPP1.
Specificity:	This antibody reacts to PHLPP1.
Formulation:	PBS with 0.09% (W/V) sodium azide State: Purified State: Liquid purified Ig
Concentration:	lot specific
Purification:	Prepared by Saturated Ammonium Sulfate (SAS) precipitation followed by dialysis against PBS
Conjugation:	Unconjugated
Storage:	Store the antibody undiluted at 2-8°C for one month or (in aliquots) at -20°C for longer. Avoid repeated freezing and thawing.
Stability:	Shelf life: one year from despatch.
Gene Name:	PH domain and leucine rich repeat protein phosphatase 1
Database Link:	<a href="#">Entrez Gene 23239 Human O60346</a>
Background:	PHLPP1 is a protein phosphatase that specifically mediates dephosphorylation of 'Ser-473' of AKT1, a protein that regulates the balance between cell survival and apoptosis through a cascade that primarily alters the function of transcription factors that regulate pro- and antiapoptotic genes.
Synonyms:	PHLPP, PLEKHE1, SCOP, KIAA0606



[View online »](#)

**Product images:**

Western blot analysis of anti-PHLPP1 Antibody (N-term) in K562 cell line lysates (35ug/lane). PHLPP1 (arrow) was detected using the purified Pab (1:60 dilution).