

Product datasheet for **AP14672PU-N**

GC1q R (C1QBP) (C-term) Rabbit Polyclonal Antibody

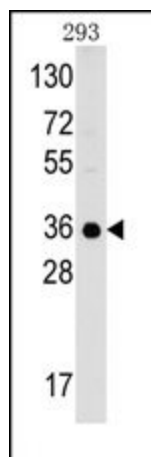
Product data:

Product Type:	Primary Antibodies
Applications:	WB
Recommended Dilution:	ELISA: 1/1,000. Western blotting: 1/50 - 1/100.
Reactivity:	Human
Host:	Rabbit
Isotype:	Ig
Clonality:	Polyclonal
Immunogen:	This antibody is generated from rabbits immunized with a KLH conjugated synthetic peptide selected from the C-terminal region of human C1QBP.
Specificity:	This antibody reacts to GC1qR (C1QBP).
Formulation:	PBS with 0.09% (W/V) sodium azide State: Purified State: Liquid purified Ig
Concentration:	lot specific
Purification:	Prepared by Saturated Ammonium Sulfate (SAS) precipitation followed by dialysis against PBS
Conjugation:	Unconjugated
Storage:	Store the antibody undiluted at 2-8°C for one month or (in aliquots) at -20°C for longer. Avoid repeated freezing and thawing.
Stability:	Shelf life: one year from despatch.
Gene Name:	complement component 1, q subcomponent binding protein
Database Link:	Entrez Gene 708 Human Q07021
Background:	The human complement subcomponent C1q associates with C1r and C1s in order to yield the first component of the serum complement system. C1QBP is known to bind to the globular heads of C1q molecules and inhibit C1 activation. This protein has also been identified as the p32 subunit of pre-mRNA splicing factor SF2, as well as a hyaluronic acid-binding protein.
Synonyms:	GC1QBP, HABP1, SF2P32, GC1q-R protein, p33, p32



[View online »](#)

Product images:



Western blot analysis of anti-C1QBP Antibody (C-term) in 293 cell line lysates (35ug/lane). C1QBP (arrow) was detected using the purified Pab (1:60 dilution).