

## Product datasheet for **AP14669PU-N**

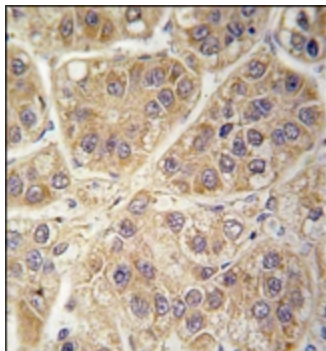
### SARS2 (Center) Rabbit Polyclonal Antibody

#### Product data:

Product Type:	Primary Antibodies
Applications:	IHC
Recommended Dilution:	ELISA: 1/1,000. Immunohistochemistry: 1/10 - 1/50.
Reactivity:	Human
Host:	Rabbit
Isotype:	Ig
Clonality:	Polyclonal
Immunogen:	This antibody is generated from rabbits immunized with a KLH conjugated synthetic peptide selected from the center region of human SARS2.
Specificity:	This antibody reacts to SARS2.
Formulation:	PBS with 0.09% (W/V) sodium azide State: Purified State: Liquid purified Ig
Concentration:	lot specific
Purification:	Prepared by Saturated Ammonium Sulfate (SAS) precipitation followed by dialysis against PBS
Conjugation:	Unconjugated
Storage:	Store the antibody undiluted at 2-8°C for one month or (in aliquots) at -20°C for longer. Avoid repeated freezing and thawing.
Stability:	Shelf life: one year from despatch.
Gene Name:	seryl-tRNA synthetase 2, mitochondrial
Database Link:	<a href="#">Entrez Gene 54938 Human Q9NP81</a>
Background:	SARS2 catalyzes the attachment of serine to tRNA(Ser). It is also able to aminoacylate tRNA(Sec) with serine, to form the misacylated tRNA L-seryl-tRNA(Sec), which will be further converted into selenocysteinyl-tRNA(Sec).
Synonyms:	SARSM, Seryl-tRNA synthetase mitochondrial



[View online »](#)

**Product images:**

Formalin-fixed and paraffin-embedded human hepatocarcinoma tissue reacted with SARS2 antibody (Center), which was peroxidase-conjugated to the secondary antibody, followed by DAB staining.