

Product datasheet for **AP14668PU-N**

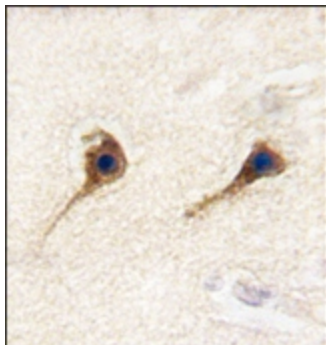
SARS2 (N-term) Rabbit Polyclonal Antibody

Product data:

Product Type:	Primary Antibodies
Applications:	IHC, WB
Recommended Dilution:	ELISA: 1/1,000. Western blotting: 1/50 - 1/100. Immunohistochemistry: 1/10 - 1/50.
Reactivity:	Human
Host:	Rabbit
Isotype:	Ig
Clonality:	Polyclonal
Immunogen:	This antibody is generated from rabbits immunized with a KLH conjugated synthetic peptide selected from the N-terminal region of human SARS2.
Specificity:	This antibody reacts to SARS2.
Formulation:	PBS with 0.09% (W/V) sodium azide State: Purified State: Liquid purified Ig
Concentration:	lot specific
Purification:	Prepared by Saturated Ammonium Sulfate (SAS) precipitation followed by dialysis against PBS
Conjugation:	Unconjugated
Storage:	Store the antibody undiluted at 2-8°C for one month or (in aliquots) at -20°C for longer. Avoid repeated freezing and thawing.
Stability:	Shelf life: one year from despatch.
Gene Name:	seryl-tRNA synthetase 2, mitochondrial
Database Link:	Entrez Gene 54938 Human Q9NP81
Background:	SARS2 catalyzes the attachment of serine to tRNA(Ser). It is also able to aminoacylate tRNA(Sec) with serine, to form the misacylated tRNA L-seryl-tRNA(Sec), which will be further converted into selenocysteinyl-tRNA(Sec).
Synonyms:	SARSM, Seryl-tRNA synthetase mitochondrial



[View online »](#)

Product images:

Formalin-fixed and paraffin-embedded human brain tissue reacted with SARS2 antibody (N-term), which was peroxidase-conjugated to the secondary antibody, followed by DAB staining.