

## Product datasheet for **AP14665PU-N**

### Cyclin C (CCNC) (C-term) Rabbit Polyclonal Antibody

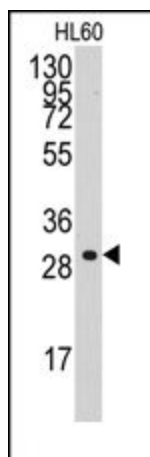
#### Product data:

Product Type:	Primary Antibodies
Applications:	WB
Recommended Dilution:	ELISA: 1/1,000. Western blotting: 1/50 - 1/100.
Reactivity:	Human
Host:	Rabbit
Isotype:	Ig
Clonality:	Polyclonal
Immunogen:	This antibody is generated from rabbits immunized with a KLH conjugated synthetic peptide selected from the C-terminal region of human CCNC.
Specificity:	This antibody reacts to Cyclin C (CCNC).
Formulation:	PBS with 0.09% (W/V) sodium azide State: Purified State: Liquid purified Ig
Concentration:	lot specific
Purification:	Prepared by Saturated Ammonium Sulfate (SAS) precipitation followed by dialysis against PBS
Conjugation:	Unconjugated
Storage:	Store the antibody undiluted at 2-8°C for one month or (in aliquots) at -20°C for longer. Avoid repeated freezing and thawing.
Stability:	Shelf life: one year from despatch.
Gene Name:	cyclin C
Database Link:	<a href="#">Entrez Gene 892 Human P24863</a>
Background:	CCNC is a member of the cyclin family of proteins. This protein interacts with cyclin-dependent kinase 8 and induces the phosphorylation of the carboxy-terminal domain of the large subunit of RNA polymerase II.
Synonyms:	Cyclin-C, hSRB11, CCNC, SRB11 homolog



[View online »](#)

## Product images:



Western blot analysis of anti-CCNC Antibody (C-term) in HL60 cell line lysates (35ug/lane). CCNC (arrow) was detected using the purified Pab (1:60 dilution).