

Product datasheet for **AP14658PU-N**

Butyrylcholinesterase (BCHE) Rabbit Polyclonal Antibody

Product data:

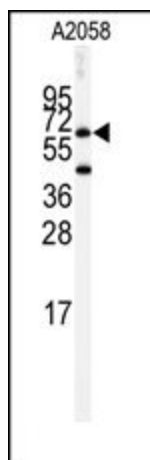
Product Type:	Primary Antibodies
Applications:	WB
Recommended Dilution:	ELISA: 1/1,000. Western blotting: 1/50 - 1/100.
Reactivity:	Human
Host:	Rabbit
Isotype:	Ig
Clonality:	Polyclonal
Immunogen:	This antibody is generated from rabbits immunized with a KLH conjugated synthetic peptide selected from the center region of human BCHE.
Specificity:	This antibody reacts to BCHE.
Formulation:	PBS with 0.09% (W/V) sodium azide State: Purified State: Liquid purified Ig
Concentration:	lot specific
Purification:	Prepared by Saturated Ammonium Sulfate (SAS) precipitation followed by dialysis against PBS
Conjugation:	Unconjugated
Storage:	Store the antibody undiluted at 2-8°C for one month or (in aliquots) at -20°C for longer. Avoid repeated freezing and thawing.
Stability:	Shelf life: one year from despatch.
Gene Name:	butyrylcholinesterase
Database Link:	Entrez Gene 590 Human P06276
Background:	Mutant proteins of BCHE are responsible for suxamethonium sensitivity. Homozygous persons sustain prolonged apnea after administration of the muscle relaxant suxamethonium in connection with surgical anesthesia. The activity of pseudocholinesterase in the serum is low and its substrate behavior is atypical. In the absence of the relaxant, the homozygote is at no known disadvantage.



[View online »](#)

Synonyms: Butyrylcholine esterase, Pseudocholinesterase, BCHE, CHE1

Product images:



Western blot analysis of anti-BCHE Antibody (Center) in A2058 cell line lysates (35ug/lane). BCHE (arrow) was detected using the purified Pab.