

Product datasheet for **AP14652PU-N**

Transglutaminase 2 (TGM2) (Center) Rabbit Polyclonal Antibody

Product data:

Product Type:	Primary Antibodies
Applications:	WB
Recommended Dilution:	ELISA: 1/1,000. Western blotting: 1/50 - 1/100.
Reactivity:	Human
Host:	Rabbit
Isotype:	Ig
Clonality:	Polyclonal
Immunogen:	This antibody is generated from rabbits immunized with a KLH conjugated synthetic peptide selected from the Center region of human TGM2.
Specificity:	This antibody reacts to Transglutaminase (TGM2).
Formulation:	PBS with 0.09% (W/V) sodium azide State: Purified State: Liquid purified Ig
Concentration:	lot specific
Purification:	Protein A column, eluted with high and low pH buffers and neutralized immediately, followed by dialysis against PBS
Conjugation:	Unconjugated
Storage:	Store the antibody undiluted at 2-8°C for one month or (in aliquots) at -20°C for longer. Avoid repeated freezing and thawing.
Stability:	Shelf life: one year from despatch.
Gene Name:	transglutaminase 2
Database Link:	Entrez Gene 7052 Human P21980



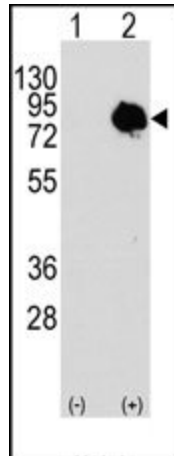
[View online »](#)

Background:

Transglutaminases are enzymes that catalyze the crosslinking of proteins by epsilon-gamma glutamyl lysine isopeptide bonds. While the primary structure of transglutaminases is not conserved, they all have the same amino acid sequence at their active sites and their activity is calcium-dependent. TGM2 acts as a monomer, is induced by retinoic acid, and appears to be involved in apoptosis. It has been identified as the autoantigen implicated in celiac disease.

Synonyms:

TGase C, TGase-H, Tissue transglutaminase

Product images:

Western blot analysis of TGM2 (arrow) using rabbit polyclonal TGM2 Antibody (Center). 293 cell lysates (2 ug/lane) either nontransfected (c) or transiently transfected with the TGM2 gene (Lane 2)