

## Product datasheet for **AP14646PU-N**

### TESK2 (Center) Rabbit Polyclonal Antibody

#### Product data:

Product Type:	Primary Antibodies
Applications:	IHC, WB
Recommended Dilution:	ELISA: 1/1,000. Western blotting: 1/50 - 1/100. Immunohistochemistry: 1/10 - 1/50.
Reactivity:	Human
Host:	Rabbit
Isotype:	Ig
Clonality:	Polyclonal
Immunogen:	This antibody is generated from rabbits immunized with a KLH conjugated synthetic peptide selected from the Center(C225) region of human TESK2.
Specificity:	This antibody reacts to TESK2.
Formulation:	PBS with 0.09% (W/V) sodium azide State: Purified State: Liquid purified Ig
Concentration:	lot specific
Purification:	Protein A column, eluted with high and low pH buffers and neutralized immediately, followed by dialysis against PBS
Conjugation:	Unconjugated
Storage:	Store the antibody undiluted at 2-8°C for one month or (in aliquots) at -20°C for longer. Avoid repeated freezing and thawing.
Stability:	Shelf life: one year from despatch.
Gene Name:	testis-specific kinase 2
Database Link:	<a href="#">Entrez Gene 10420 Human</a> <a href="#">Q96S53</a>



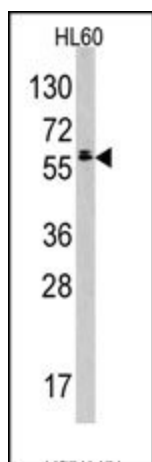
[View online »](#)

**Background:**

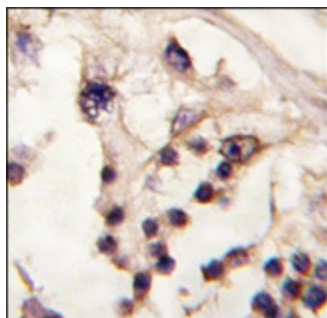
TESK2 is a dual specificity protein kinase activity catalyzing autophosphorylation and phosphorylation of exogenous substrates on both serine/threonine and tyrosine residues. TESK2 phosphorylates cofilin at Ser-3. It may play an important role in spermatogenesis. This nuclear enzyme is thought to be activated by autophosphorylation on Ser-219. Expression is predominantly in testis and prostate, with highest concentrations in nongerminal Sertoli cells.

**Synonyms:**

Testicular protein kinase 2

**Product images:**

Western blot analysis of anti-TESK2 Antibody (Center) in HL60 cell line lysates (35ug/lane). TESK2 (arrow) was detected using the purified Pab (1:60 dilution).



Formalin-fixed and paraffin-embedded human testis tissue reacted with TESK2 antibody (Center), which was peroxidase-conjugated to the secondary antibody, followed by DAB staining.