

Product datasheet for **AP14642PU-N**

RIP2 (RIPK2) (C-term) Rabbit Polyclonal Antibody

Product data:

Product Type:	Primary Antibodies
Applications:	IHC, WB
Recommended Dilution:	Western blotting: 1/1000. Immunohistochemistry: 1/50 - 1/100.
Reactivity:	Human, Mouse
Host:	Rabbit
Isotype:	Ig
Clonality:	Polyclonal
Immunogen:	This antibody is generated from rabbits immunized with a KLH conjugated synthetic peptide between aa 458 - 488 from the C-terminal region of human RIPK2.
Specificity:	This antibody reacts to RIP2 (RIIPK2).
Formulation:	PBS with 0.09% (W/V) sodium azide State: Purified State: Liquid purified Ig
Concentration:	lot specific
Purification:	Saturated Ammonium Sulfate (SAS) precipitation followed by dialysis against PBS.
Conjugation:	Unconjugated
Storage:	Store the antibody undiluted at 2-8°C for one month or (in aliquots) at -20°C for longer. Avoid repeated freezing and thawing.
Stability:	Shelf life: one year from despatch.
Gene Name:	receptor interacting serine/threonine kinase 2
Database Link:	Entrez Gene 192656 Mouse Entrez Gene 8767 Human O43353
Background:	RIPK2 is a member of the receptor-interacting protein (RIP) family of serine/threonine protein kinases. The encoded protein contains a C-terminal recruitment domain (CARD), and is a component of signaling complexes in both the innate and adaptive immune pathways. It is a potent activator of NF-kappaB and inducer of apoptosis in response to various stimuli.
Synonyms:	CARDIAK, RICK, RIP2, RIP-2, Receptor-interacting protein 2

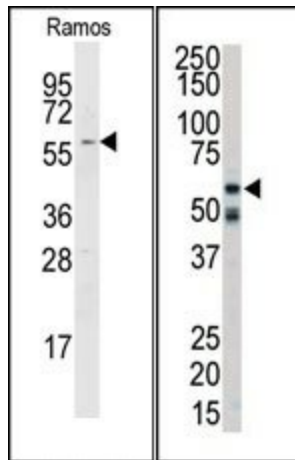


[View online »](#)

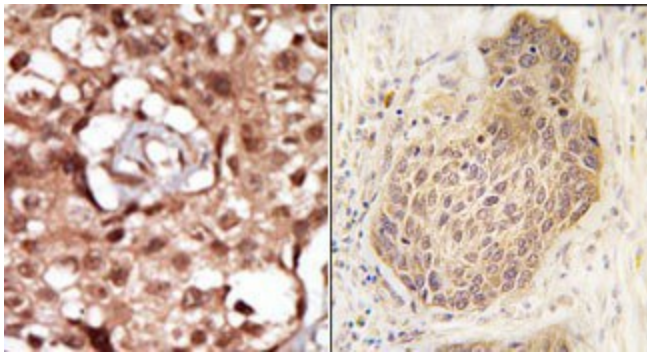
Protein Families: Druggable Genome, Protein Kinase

Protein Pathways: Neurotrophin signaling pathway, NOD-like receptor signaling pathway

Product images:



(LEFT) Western blot analysis of anti-RIPK2 Pab in Ramos cell line lysates (35ug/lane). RIPK2 (arrow) was detected using the purified Pab. (RIGHT) Western blot analysis of anti-RIPK2 Pab in mouse cerebellum tissue lysate. RIPK2 (arrow) was detected using purified Pab. Secondary HRP-anti-rabbit was used for signal visualization with chemiluminescence.



(LEFT) Formalin-fixed and paraffin-embedded human cancer tissue reacted with the primary antibody, which was peroxidase-conjugated to the secondary antibody, followed by AEC staining. (RIGHT) Formalin-fixed and paraffin-embedded human lung carcinoma tissue reacted with RIPK2 Antibody (C-term), which was peroxidase-conjugated to the secondary antibody, followed by DAB staining.