

## Product datasheet for **AP14616PU-N**

### **B Raf (BRAF) Rabbit Polyclonal Antibody**

#### **Product data:**

Product Type:	Primary Antibodies
Applications:	IHC, WB
Recommended Dilution:	<b>Peptide ELISA:</b> 1/1,000. <b>Western blotting:</b> 1/1,000. <b>Immunohistochemistry:</b> 1/10-1/50.
Reactivity:	Human
Host:	Rabbit
Isotype:	Ig
Clonality:	Polyclonal
Immunogen:	KLH conjugated synthetic peptide corresponding to amino acid between 425-453 from human BRAF.
Specificity:	This antibody reacts to B-RAF around Ser445.
Formulation:	PBS with 0.09% (W/V) sodium azide State: Aff - Purified State: Liquid purified Ig
Concentration:	lot specific
Purification:	Protein A column, followed by peptide affinity purification
Conjugation:	Unconjugated
Storage:	Store the antibody undiluted at 2-8°C for one month or (in aliquots) at -20°C for longer. Avoid repeated freezing and thawing.
Stability:	Shelf life: one year from despatch.
Gene Name:	B-Raf proto-oncogene, serine/threonine kinase
Database Link:	<a href="#">Entrez Gene 673 Human P15056</a>



[View online »](#)

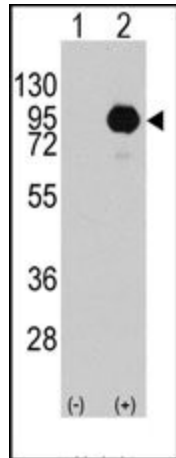
**Background:**

BRAF, a member of the RAF subfamily of Ser/Thr protein kinases, is involved in the transduction of mitogenic signals from the cell membrane to the nucleus. It may play a role in the postsynaptic responses of hippocampal neurons. This cytoplasmic protein is expressed in brain and testis. Defects in BRAF are involved in a wide range of cancers including lung cancer and non-Hodgkin lymphoma (NHL). This protein contains 1 zinc-dependent phorbol-ester and DAG binding domain.

**Synonyms:**

BRAF, BRAF1, RAFB1, p94

**Product images:**



Western blot analysis of BRAF (arrow) using rabbit polyclonal BRAF Antibody (S445). 293 cell lysates (2 ug/lane) either nontransfected (Lane 1) or transiently transfected with the BRAF gene (Lane 2)



Formalin-fixed and paraffin-embedded human brain tissue reacted with BRAF Antibody (S445), which was peroxidase-conjugated to the secondary antibody, followed by DAB staining.