

Product datasheet for **AP14615PU-N**

B Raf (BRAF) Rabbit Polyclonal Antibody

Product data:

Product Type:	Primary Antibodies
Applications:	IHC, WB
Recommended Dilution:	ELISA. Western Blot. Immunohistochemistry.
Reactivity:	Human
Host:	Rabbit
Isotype:	Ig
Clonality:	Polyclonal
Immunogen:	This antibody is generated from rabbits immunized with a KLH conjugated synthetic peptide corresponding to amino acid residues surrounding T400 of human BRAF.
Specificity:	This antibody reacts to BRAF around Thr400.
Formulation:	PBS with 0.09% (W/V) sodium azide State: Aff - Purified State: Liquid purified Ig
Concentration:	lot specific
Purification:	Protein A column, followed by peptide affinity purification
Conjugation:	Unconjugated
Storage:	Store the antibody undiluted at 2-8°C for one month or (in aliquots) at -20°C for longer. Avoid repeated freezing and thawing.
Stability:	Shelf life: one year from despatch.
Gene Name:	B-Raf proto-oncogene, serine/threonine kinase
Database Link:	Entrez Gene 673 Human P15056



[View online »](#)

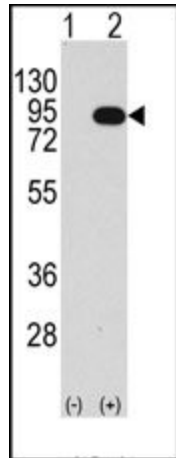
Background:

BRAF, a member of the RAF subfamily of Ser/Thr protein kinases, is involved in the transduction of mitogenic signals from the cell membrane to the nucleus. It may play a role in the postsynaptic responses of hippocampal neurons. This cytoplasmic protein is expressed in brain and testis. Defects in BRAF are involved in a wide range of cancers including lung cancer and non-Hodgkin lymphoma (NHL). This protein contains 1 zinc-dependent phorbol-ester and DAG binding domain.

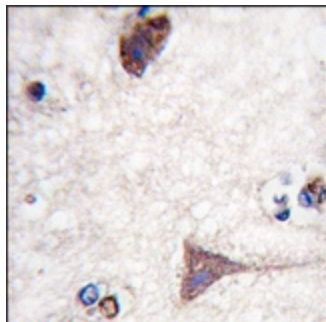
Synonyms:

BRAF, BRAF1, RAFB1, p94

Product images:



Western blot analysis of BRAF (arrow) using rabbit polyclonal BRAF Antibody (T400). 293 cell lysates (2 ug/lane) either nontransfected (Lane 1) or transiently transfected with the BRAF gene (Lane 2).



Formalin-fixed and paraffin-embedded human brain tissue reacted with BRAF-pT400, which was peroxidase-conjugated to the secondary antibody, followed by DAB staining.