

Product datasheet for **AP14608PU-N**

ACVRL1 (N-term) Rabbit Polyclonal Antibody

Product data:

Product Type:	Primary Antibodies
Applications:	IF, IHC, WB
Recommended Dilution:	ELISA: 1/1,000. Western blotting: 1/100-1/500. Immunohistochemistry: 1/50- 1/100. Immunofluorescence. (See Ref.1)
Reactivity:	Human, Mouse
Host:	Rabbit
Isotype:	Ig
Clonality:	Polyclonal
Immunogen:	This antibody is generated from rabbits immunized with a KLH conjugated synthetic peptide selected from the N-terminal region of Human ACVRL1.
Specificity:	This antibody recognizes ACVRL1.
Formulation:	PBS with 0.09% (W/V) Sodium Azide as preservative. State: Purified State: Liquid purified Ig fraction.
Concentration:	lot specific
Purification:	Protein G Chromatography, eluted with high and low pH buffers and neutralized immediately, followed by dialysis against PBS.
Conjugation:	Unconjugated
Storage:	Store the antibody undiluted at 2-8°C for one month or (in aliquots) at -20°C for longer. Avoid repeated freezing and thawing.
Stability:	Shelf life: one year from despatch.
Gene Name:	activin A receptor like type 1
Database Link:	Entrez Gene 94 Human P37023



[View online »](#)

Background:

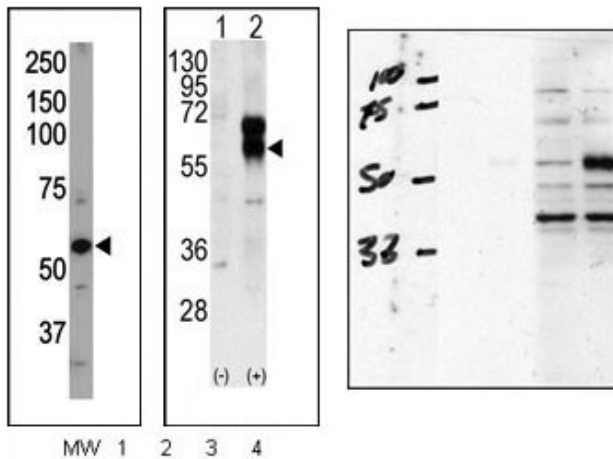
ACVRL1 is a type I cell-surface receptor for the TGF-beta superfamily of ligands. It shares with other type I receptors a high degree of similarity in serine-threonine kinase subdomains, a glycine- and serine-rich region (called the GS domain) preceding the kinase domain, and a short C-terminal tail. This protein, sometimes termed ALK1, shares similar domain structures with other closely related ALK or activin receptor-like kinase proteins that form a subfamily of receptor serine/threonine kinases. Mutations in this gene are associated with hemorrhagic telangiectasia type 2, also known as Rendu-Osler-Weber syndrome 2.

Synonyms:

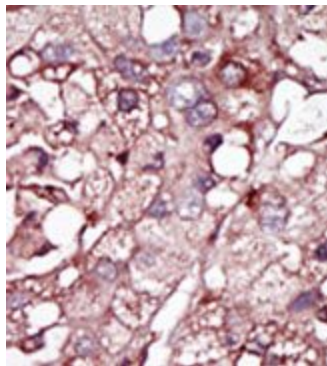
ACVRLK1, Activin receptor-like kinase 1, SKR3

Note:

Calculated Molecular Weight: 56124 Da

Product images:


Western blot of analysis using ACVRL1 Pab. Left: Mouse heart tissue lysate. Middle: Western blot analysis of ACVRL1 (arrow) using rabbit polyclonal ACVRL1 Antibody (N-term). 293 cell lysates (2 ug/lane) either nontransfected (Lane 1) or transiently transfected with the ACVRL1 gene (Lane 2). Right: Human Chondrocytes (C28/I2 cells), transfected with empty vector (lane 1, 3) or ACVRL1 (lane 2, 4). RIPA lysis buffer, 20 ug/lane of protein, primary antibody dilution 1:1000, blocking solution is 5% milk in TBST (lane 1 and 2), 5% BSA in TBST (lane 3 and 4).



Formalin-fixed and paraffin-embedded human cancer tissue reacted with the primary antibody, which was peroxidase-conjugated to the secondary antibody, followed by DAB staining.