

Product datasheet for **AP14594PU-N**

PHLPP2 (N-term) Rabbit Polyclonal Antibody

Product data:

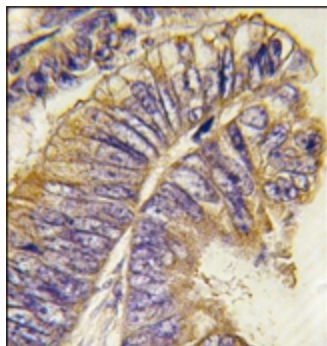
Product Type:	Primary Antibodies
Applications:	IHC
Recommended Dilution:	ELISA: 1/1,000. Immunohistochemistry: 1/10 - 1/50.
Reactivity:	Human
Host:	Rabbit
Isotype:	Ig
Clonality:	Polyclonal
Immunogen:	This antibody is generated from rabbits immunized with a KLH conjugated synthetic peptide selected from the N-term region of human PHLPP2.
Specificity:	This antibody reacts to PHLPP2.
Formulation:	PBS with 0.09% (W/V) sodium azide State: Purified State: Liquid purified Ig
Concentration:	lot specific
Purification:	Prepared by Saturated Ammonium Sulfate (SAS) precipitation followed by dialysis against PBS
Conjugation:	Unconjugated
Storage:	Store the antibody undiluted at 2-8°C for one month or (in aliquots) at -20°C for longer. Avoid repeated freezing and thawing.
Stability:	Shelf life: one year from despatch.
Gene Name:	PH domain and leucine rich repeat protein phosphatase 2
Database Link:	Entrez Gene 23035 Human Q6ZVD8
Background:	PHLPP2 is a protein phosphatase that specifically mediates dephosphorylation of 'Ser-473' of AKT1. This protein regulates the balance between cell survival and apoptosis through a cascade that primarily alters the function of transcription factors that regulate pro- and antiapoptotic genes. Dephosphorylation of 'Ser-473' of AKT1 triggers apoptosis and decrease cell proliferation. It also controls the phosphorylation of AKT3.



[View online >](#)

Synonyms: PHLPL, PHLPP-like, KIAA0931

Product images:



Formalin-fixed and paraffin-embedded human colon carcinoma tissue reacted with PHLPP2 antibody (N-term), which was peroxidase-conjugated to the secondary antibody, followed by DAB staining.