

Product datasheet for **AP14569PU-N**

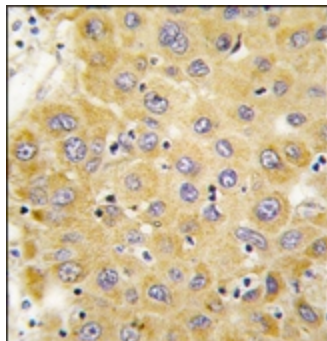
CCN2 (C-term) Rabbit Polyclonal Antibody

Product data:

Product Type:	Primary Antibodies
Applications:	IHC
Recommended Dilution:	ELISA: 1/1,000. Immunohistochemistry: 1/10 - 1/50.
Reactivity:	Human
Host:	Rabbit
Isotype:	Ig
Clonality:	Polyclonal
Immunogen:	This antibody is generated from rabbits immunized with a KLH conjugated synthetic peptide selected from the C-terminal region of human CTGF.
Specificity:	This antibody reacts to CTGF.
Formulation:	PBS with 0.09% (W/V) sodium azide State: Purified State: Liquid purified Ig
Concentration:	lot specific
Purification:	Prepared by Saturated Ammonium Sulfate (SAS) precipitation followed by dialysis against PBS
Conjugation:	Unconjugated
Storage:	Store the antibody undiluted at 2-8°C for one month or (in aliquots) at -20°C for longer. Avoid repeated freezing and thawing.
Stability:	Shelf life: one year from despatch.
Gene Name:	connective tissue growth factor
Database Link:	Entrez Gene 1490 Human P29279
Background:	Connective tissue growth factor (CTGF), a member of the CCN family of secreted matricellular proteins, regulates fibrosis, angiogenesis, cell proliferation, apoptosis, tumor growth, and metastasis.
Synonyms:	CCN2, HCS24, IGFBP8, Connective tissue growth factor, IGF-binding protein 8, IBP8



[View online »](#)

Product images:

Formalin-fixed and paraffin-embedded human hepatocarcinoma tissue reacted with CTGF antibody (C-term), which was peroxidase-conjugated to the secondary antibody, followed by DAB staining.