

## Product datasheet for **AP14566PU-N**

### **BACE1 (N-term) Rabbit Polyclonal Antibody**

#### **Product data:**

Product Type:	Primary Antibodies
Applications:	IHC, WB
Recommended Dilution:	<b>ELISA:</b> 1/1000. <b>Western blot:</b> 1/1000. <b>Immunohistochemistry on Paraffin Sections:</b> 1/10-1/50.
Reactivity:	Human, Mouse
Host:	Rabbit
Isotype:	Ig
Clonality:	Polyclonal
Immunogen:	KLH conjugated synthetic peptide between 38-70 amino acids from the N-terminal region of Human BACE1.
Specificity:	This antibody recognizes BACE1.
Formulation:	PBS with 0.09% (W/V) Sodium Azide as preservative State: Purified State: Liquid purified Ig fraction
Concentration:	lot specific
Purification:	Prepared by Saturated Ammonium Sulfate (SAS) precipitation followed by dialysis against PBS
Conjugation:	Unconjugated
Storage:	Store the antibody undiluted at 2-8°C for one month or (in aliquots) at -20°C for longer. Avoid repeated freezing and thawing.
Stability:	Shelf life: one year from despatch.
Gene Name:	beta-secretase 1
Database Link:	<a href="#">Entrez Gene 23621 Human P56817</a>



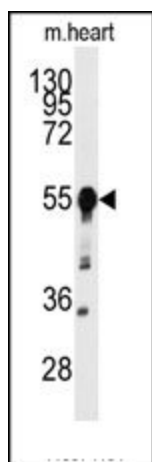
[View online »](#)

**Background:**

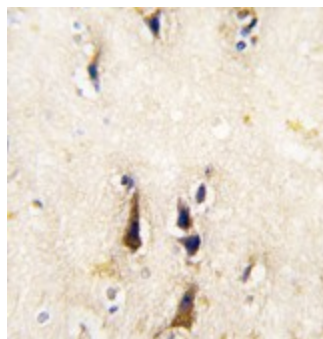
Cerebral deposition of amyloid beta peptide is an early and critical feature of Alzheimer's disease. Amyloid beta peptide is generated by proteolytic cleavage of amyloid precursor protein (APP) by two proteases, one of which is BACE. This protein, a member of the peptidase A1 protein family, is a type I integral membrane glycoprotein and aspartic protease that is found mainly in the Golgi.

**Synonyms:**

BACE, KIAA1149, Beta-secretase 1, Memapsin-2, Aspartyl protease 2, ASP2, BACE-1

**Product images:**

Western blot analysis of anti-BACE1 Antibody (N-term) in mouse heart tissue lysates (35ug/lane). BACE1 (arrow) was detected using the purified Pab.



Formalin-fixed and paraffin-embedded human brain tissue reacted with BACE1 antibody (N-term), which was peroxidase-conjugated to the secondary antibody, followed by DAB staining.