

## Product datasheet for **AP14565PU-N**

### **BACE1 Rabbit Polyclonal Antibody**

#### **Product data:**

|                       |   |
|-----------------------|---|
| Product Type:         | Primary Antibodies  |
| Applications:         | IHC, WB   |
| Recommended Dilution: | <b>ELISA:</b> 1/1000.<br><b>Western blotting:</b> 1/1000.<br><b>Immunohistochemistry on Paraffin Sections:</b> 1/50-1/100.        |
| Reactivity:           | Human, Mouse  |
| Host:                 | Rabbit  |
| Isotype:              | Ig  |
| Clonality:            | Polyclonal  |
| Immunogen:            | KLH conjugated synthetic peptide corresponding to amino acid residues surrounding S498 of Human BACE.                             |
| Specificity:          | This antibody recognizes BACE around Ser498.  |
| Formulation:          | PBS with 0.09% (W/V) Sodium Azide as preservative<br>State: Purified<br>State: Liquid purified Ig fraction                        |
| Concentration:        | lot specific  |
| Purification:         | Prepared by Saturated Ammonium Sulfate (SAS) precipitation followed by dialysis against PBS                                       |
| Conjugation:          | Unconjugated  |
| Storage:              | Store the antibody undiluted at 2-8°C for one month or (in aliquots) at -20°C for longer.<br>Avoid repeated freezing and thawing. |
| Stability:            | Shelf life: one year from despatch.   |
| Gene Name:            | beta-secretase 1  |
| Database Link:        | <a href="#">Entrez Gene 23621 Human P56817</a>  |



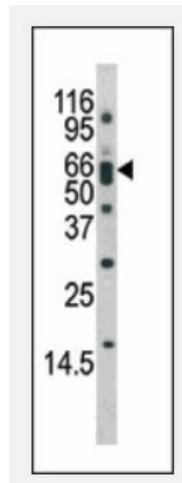
[View online »](#)

**Background:**

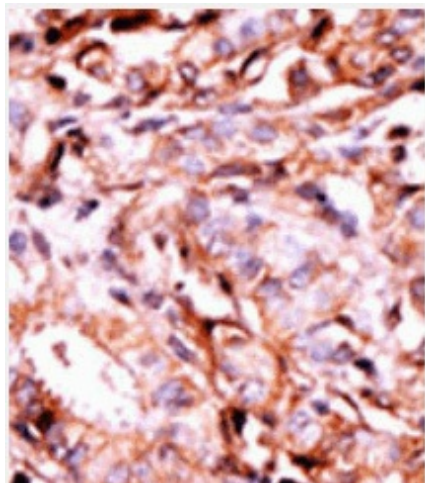
Cerebral deposition of amyloid beta peptide is an early and critical feature of Alzheimer's disease. Amyloid beta peptide is generated by proteolytic cleavage of amyloid precursor protein (APP) by two proteases, one of which is BACE. This protein, a member of the peptidase A1 protein family, is a type I integral membrane glycoprotein and aspartic protease that is found mainly in the Golgi.

**Synonyms:**

BACE, KIAA1149, Beta-secretase 1, Memapsin-2, Aspartyl protease 2, ASP2, BACE-1

**Product images:**

The anti-Phospho-BACE Antibody (pSer498) is used in Western blot to detect Phospho-BACE-S498 in mouse brain tissue lysate.



Formalin-Fixed and paraffin-embedded human cancer tissue reacted with the primary antibody, which was peroxidase-conjugated to the secondary antibody, followed by AEC staining.