

Product datasheet for **AP14560PU-N**

NGF Rabbit Polyclonal Antibody

Product data:

Product Type:	Primary Antibodies
Applications:	IHC
Recommended Dilution:	ELISA: 1/1,000. Immunohistochemistry: 1/10 - 1/50.
Reactivity:	Human
Host:	Rabbit
Isotype:	Ig
Clonality:	Polyclonal
Immunogen:	This antibody is generated from rabbits immunized with a KLH conjugated synthetic peptide selected from the Center region of human NGFB.
Specificity:	This antibody reacts to NGFB.
Formulation:	PBS with 0.09% (W/V) sodium azide State: Purified State: Liquid purified Ig
Concentration:	lot specific
Purification:	Prepared by Saturated Ammonium Sulfate (SAS) precipitation followed by dialysis against PBS
Conjugation:	Unconjugated
Storage:	Store the antibody undiluted at 2-8°C for one month or (in aliquots) at -20°C for longer. Avoid repeated freezing and thawing.
Stability:	Shelf life: one year from despatch.
Gene Name:	nerve growth factor
Database Link:	Entrez Gene 4803 Human P01138



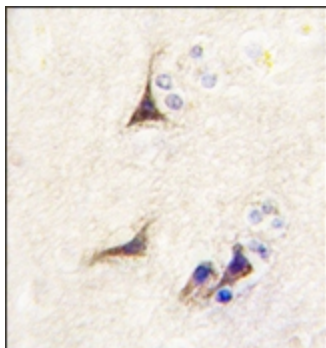
[View online »](#)

Background:

NGFB is a member of the NGF-beta family. It is a secreted protein which homodimerizes and is incorporated into a larger complex. This protein has nerve growth stimulating activity and the complex is involved in the regulation of growth and the differentiation of sympathetic and certain sensory neurons. Mutations in the gene encoding NGFB have been associated with hereditary sensory and autonomic neuropathy, type 5 (HSAN5), and dysregulation of the gene's expression is associated with allergic rhinitis.

Synonyms:

Beta-NGF, NGFB, Beta-nerve growth factor

Product images:

Formalin-fixed and paraffin-embedded human brain tissue reacted with NGFB antibody (Center), which was peroxidase-conjugated to the secondary antibody, followed by DAB staining.