

Product datasheet for **AP14556PU-N**

CaMKK (CAMKK1) (N-term) Rabbit Polyclonal Antibody

Product data:

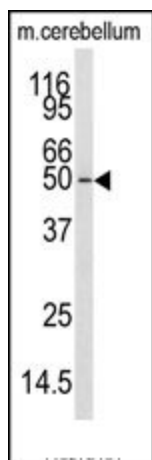
Product Type:	Primary Antibodies
Applications:	WB
Recommended Dilution:	ELISA: 1/1,000. Western Blot: 1/50-1/100.
Reactivity:	Human
Host:	Rabbit
Isotype:	Ig
Clonality:	Polyclonal
Immunogen:	This antibody is generated from rabbits immunized with a KLH conjugated synthetic peptide selected from the N-terminal region of human CAMKK1.
Specificity:	This antibody reacts with CAMKK1 (N-term).
Formulation:	PBS with 0.09% (W/V) Sodium Azide as preservative. State: Purified State: Liquid purified Ig fraction.
Concentration:	lot specific
Purification:	Prepared by Saturated Ammonium Sulfate (SAS) precipitation followed by dialysis against PBS
Conjugation:	Unconjugated
Storage:	Store the antibody undiluted at 2-8°C for one month or (in aliquots) at -20°C for longer. Avoid repeated freezing and thawing.
Stability:	Shelf life: one year from despatch.
Gene Name:	calcium/calmodulin-dependent protein kinase kinase 1
Database Link:	Entrez Gene 84254 Human Q8N5S9
Background:	CAMKK1 belongs to the Serine/Threonine protein kinase family, and to the Ca(2+)/calmodulin-dependent protein kinase subfamily. This protein plays a role in the calcium/calmodulin-dependent (CaM) kinase cascade. CaMKK alpha and beta proteins have been identified as well as several variants of each.



[View online »](#)

Synonyms: CAMKKA, CaM-kinase IV kinase, CaMKK-1, CaMKK alpha, CaM-KK alpha, CaM-kinase kinase alpha

Product images:



Western blot analysis of anti-CAMKK1 Antibody (N-term) in mouse cerebellum tissue lysates (35ug/lane). CAMKK1 (arrow) was detected using the purified Pab.