

Product datasheet for **AP14550PU-N**

p21 Ras (HRAS) (Center) Rabbit Polyclonal Antibody

Product data:

Product Type:	Primary Antibodies
Applications:	IHC, WB
Recommended Dilution:	ELISA: 1/1,000. Western blotting: 1/50 - 1/100.
Reactivity:	Human
Host:	Rabbit
Isotype:	Ig
Clonality:	Polyclonal
Immunogen:	This antibody is generated from rabbits immunized with a KLH conjugated synthetic peptide selected from the Center region of human HRAS.
Specificity:	This antibody reacts to HRAS.
Formulation:	PBS with 0.09% (W/V) sodium azide State: Purified State: Liquid purified Ig
Concentration:	lot specific
Purification:	Prepared by Saturated Ammonium Sulfate (SAS) precipitation followed by dialysis against PBS
Conjugation:	Unconjugated
Storage:	Store the antibody undiluted at 2-8°C for one month or (in aliquots) at -20°C for longer. Avoid repeated freezing and thawing.
Stability:	Shelf life: one year from despatch.
Gene Name:	Harvey rat sarcoma viral oncogene homolog
Database Link:	Entrez Gene 3265 Human P01112



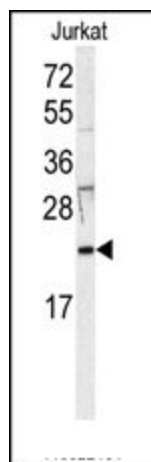
[View online »](#)

Background:

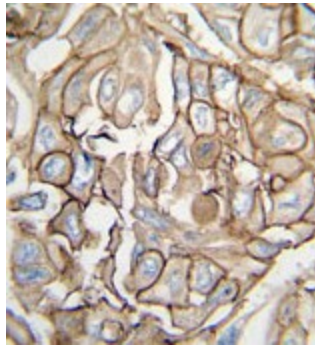
HRAS belongs to the Ras oncogene family, whose members are related to the transforming genes of mammalian sarcoma retroviruses. These proteins function in signal transduction pathways. They can bind GTP and GDP, and they have intrinsic GTPase activity. HRAS undergoes a continuous cycle of de- and re-palmitoylation, which regulates its rapid exchange between the plasma membrane and the Golgi apparatus. Mutations in this gene cause Costello syndrome, a disease characterized by increased growth at the prenatal stage, growth deficiency at the postnatal stage, predisposition to tumor formation, mental retardation, skin and musculoskeletal abnormalities, distinctive facial appearance and cardiovascular abnormalities. Defects in the HRAS gene are implicated in a variety of cancers, including bladder cancer, follicular thyroid cancer, and oral squamous cell carcinoma.

Synonyms:

GTPase HRas, HRAS1, p21ras, H-Ras-1, c-H-ras, Ha-Ras, H-Ras

Product images:

Western blot analysis of anti-HRAS Antibody (Center) in Jurkat cell line lysates (35ug/lane). HRAS (arrow) was detected using the purified Pab.



Formalin-fixed and paraffin-embedded human lung carcinoma tissue reacted with HRAS antibody (Center), which was peroxidase-conjugated to the secondary antibody, followed by DAB staining.