

## Product datasheet for **AP14548PU-N**

### Neurotrophin 3 (NTF3) (C-term) Rabbit Polyclonal Antibody

#### Product data:

Product Type:	Primary Antibodies
Applications:	WB
Recommended Dilution:	ELISA: 1/1,000. Western blotting: 1/50 - 1/100.
Reactivity:	Human, Mouse
Host:	Rabbit
Isotype:	Ig
Clonality:	Polyclonal
Immunogen:	This antibody is generated from rabbits immunized with a KLH conjugated synthetic peptide selected from the C-terminal region of human NTF3.
Specificity:	This antibody reacts to NTF3.
Formulation:	PBS with 0.09% (W/V) sodium azide State: Purified State: Liquid purified Ig
Concentration:	lot specific
Purification:	Prepared by Saturated Ammonium Sulfate (SAS) precipitation followed by dialysis against PBS
Conjugation:	Unconjugated
Storage:	Store the antibody undiluted at 2-8°C for one month or (in aliquots) at -20°C for longer. Avoid repeated freezing and thawing.
Stability:	Shelf life: one year from despatch.
Gene Name:	neurotrophin 3
Database Link:	<a href="#">Entrez Gene 4908 Human P20783</a>



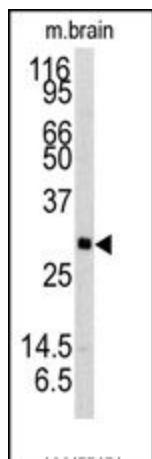
[View online »](#)

**Background:**

NTF3 is a member of the neurotrophin family that controls survival and differentiation of mammalian neurons. This protein is closely related to both nerve growth factor and brain-derived neurotrophic factor. It may be involved in the maintenance of the adult nervous system, and may affect development of neurons in the embryo when it is expressed in human placenta. NTF3-deficient mice generated by gene targeting display severe movement defects of the limbs. The mature peptide of this protein is identical in all mammals examined including human, pig, rat and mouse.

**Synonyms:**

Neurotrophin-3, NT-3, Neurotrophic factor, HDNF, Nerve growth factor 2, NGF-2

**Product images:**

Western blot analysis of anti-NTF3 Antibody (C-term) in mouse brain tissue lysates (35ug/lane). NTF3 (arrow) was detected using the purified Pab.