

## Product datasheet for **AP14545PU-N**

### **BICD2 (C-term) Rabbit Polyclonal Antibody**

#### **Product data:**

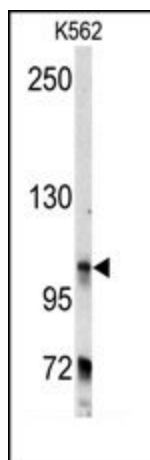
<b>Product Type:</b>	Primary Antibodies
<b>Applications:</b>	IHC, WB
<b>Recommended Dilution:</b>	ELISA: 1/1,000. Western blotting: 1/50 - 1/100. Immunohistochemistry: 1/1 - 1/050.
<b>Reactivity:</b>	Human
<b>Host:</b>	Rabbit
<b>Isotype:</b>	Ig
<b>Clonality:</b>	Polyclonal
<b>Immunogen:</b>	This antibody is generated from rabbits immunized with a KLH conjugated synthetic peptide selected from the C-terminal region of human BICD2.
<b>Specificity:</b>	This antibody reacts to BICD2.
<b>Formulation:</b>	PBS with 0.09% (W/V) sodium azide State: Purified State: Liquid purified Ig
<b>Concentration:</b>	lot specific
<b>Purification:</b>	Prepared by Saturated Ammonium Sulfate (SAS) precipitation followed by dialysis against PBS
<b>Conjugation:</b>	Unconjugated
<b>Storage:</b>	Store the antibody undiluted at 2-8°C for one month or (in aliquots) at -20°C for longer. Avoid repeated freezing and thawing.
<b>Stability:</b>	Shelf life: one year from despatch.
<b>Gene Name:</b>	BICD cargo adaptor 2
<b>Database Link:</b>	<a href="#">Entrez Gene 23299 Human Q8TD16</a>
<b>Background:</b>	BICD2 is one of two human homologs of Drosophila bicaudal-D and a member of the Bicoid family. It has been implicated in dynein-mediated, minus end-directed motility along microtubules. It has also been reported to be a phosphorylation target of NIMA related kinase 8.



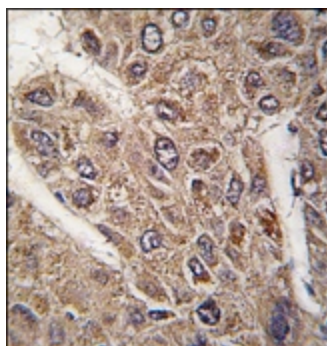
[View online »](#)

Synonyms: Bic-D2, KIAA0699, Protein bicaudal D homolog 2

### Product images:



Western blot analysis of anti-BICD2 Antibody (C-term) in K562 cell line lysates (35ug/lane). BICD2 (arrow) was detected using the purified Pab.



Formalin-fixed and paraffin-embedded human hepatocarcinoma tissue reacted with BICD2 antibody (C-term), which was peroxidase-conjugated to the secondary antibody, followed by DAB staining.