

Product datasheet for **AP14544PU-N**

Semaphorin 3A (SEMA3A) (Center) Rabbit Polyclonal Antibody

Product data:

Product Type:	Primary Antibodies
Applications:	IHC
Recommended Dilution:	ELISA: 1/1,000. Western Blot: 1/1,000. Immunohistochemistry: 1/10-1/50.
Reactivity:	Human
Host:	Rabbit
Isotype:	Ig
Clonality:	Polyclonal
Immunogen:	This antibody is generated from rabbits immunized with a KLH conjugated synthetic peptide selected between 535-566 amino acids from the Center region of human SEMA3A.
Specificity:	This antibody recognizes SEMA3A.
Formulation:	PBS with 0.09% (W/V) Sodium Azide State: Purified State: Liquid purified Ig fraction
Concentration:	lot specific
Purification:	Prepared by Saturated Ammonium Sulfate (SAS) precipitation followed by dialysis against PBS
Conjugation:	Unconjugated
Storage:	Store undiluted at 2-8°C for one month or (in aliquots) at -20°C for longer. Avoid repeated freezing and thawing.
Stability:	Shelf life: one year from despatch.
Gene Name:	semaphorin 3A
Database Link:	Entrez Gene 10371 Human Q14563



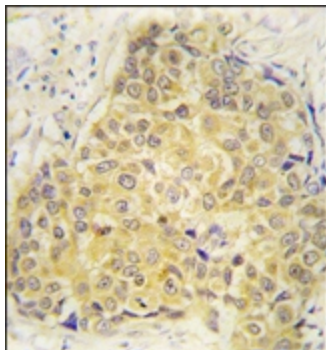
[View online »](#)

Background:

SEMA3A is a member of the semaphorin family with an Ig-like C2-type (immunoglobulin-like) domain, a PSI domain and a Sema domain. This secreted protein can function as either a chemorepulsive agent, inhibiting axonal outgrowth, or as a chemoattractive agent, stimulating the growth of apical dendrites. In both cases, the protein is vital for normal neuronal pattern development. Increased expression of this protein is associated with schizophrenia and is seen in a variety of human tumor cell lines. Also, aberrant release of this protein is associated with the progression of Alzheimer's disease.

Synonyms:

Semaphorin-3A, Semaphorin III, Sema III, SEMAD

Product images:

Formalin-fixed and paraffin-embedded human breast carcinoma tissue reacted with SEMA3A antibody (Center), which was peroxidase-conjugated to the secondary antibody, followed by DAB staining.