

## Product datasheet for **AP14528PU-N**

### **KLF10 (N-term) Rabbit Polyclonal Antibody**

#### **Product data:**

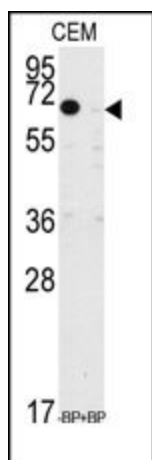
Product Type:	Primary Antibodies
Applications:	IHC, WB
Recommended Dilution:	<b>Western blotting:</b> 1/1000. <b>Immunohistochemistry on Paraffin Sections:</b> 1/10-1/50.
Reactivity:	Human
Host:	Rabbit
Isotype:	Ig
Clonality:	Polyclonal
Immunogen:	KLH conjugated synthetic peptide between 13-40 amino acids from the N-terminal region of Human TIEG.
Specificity:	This antibody recognizes TIEG (N-term).
Formulation:	PBS with 0.09% (W/V) Sodium Azide as preservative. State: Purified State: Liquid purified Ig fraction
Concentration:	lot specific
Purification:	Prepared by Saturated Ammonium Sulfate (SAS) precipitation followed by dialysis against PBS.
Conjugation:	Unconjugated
Storage:	Store the antibody undiluted at 2-8°C for one month or (in aliquots) at -20°C for longer. Avoid repeated freezing and thawing.
Stability:	Shelf life: one year from despatch.
Gene Name:	Kruppel-like factor 10
Database Link:	<a href="#">Entrez Gene 7071 Human Q13118</a>
Background:	TIEG is a transcriptional repressor involved in the regulation of cell growth. TIEG binds to the consensus sequence 5'-GGTGTG-3' and inhibits cell growth.
Synonyms:	Krueppel-like factor 10, EGR-alpha, TIEG, TIEG-1



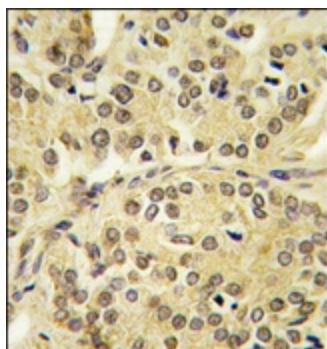
[View online »](#)

**Note:** Calculated Molecular Weight: 52555 Da predicted by amino acid sequence.  
Theoretical pI: 9.29 Da

### Product images:



Western blot analysis of anti-TIEG Antibody (N-term) pre-incubated with and without blocking peptide in CEM cell line lysate. TIEG (N-term) (arrow) was detected using the purified Pab (1:60 dilution).



Formalin-fixed and paraffin-embedded human prostate carcinoma tissue reacted with TIEG antibody (N-term), which was peroxidase-conjugated to the secondary antibody, followed by DAB staining.