

## Product datasheet for **AP14524PU-N**

### TEM8 (ANTXR1) Rabbit Polyclonal Antibody

#### Product data:

Product Type:	Primary Antibodies
Applications:	IHC, WB
Recommended Dilution:	ELISA: 1/1,000. Western blotting: 1/50-1/100. Immunohistochemistry: 1/10-1/50.
Reactivity:	Human
Host:	Rabbit
Isotype:	Ig
Clonality:	Polyclonal
Immunogen:	KLH conjugated synthetic peptide between 365~394 amino acids surrounding Tyr382 of Human ANTXR1.
Specificity:	This antibody recognizesANTXR1.
Formulation:	PBS with 0.09% (W/V) Sodium Azide State: Aff - Purified State: Liquid purified Ig fraction
Concentration:	lot specific
Purification:	Affinity Chromatography on Protein A
Conjugation:	Unconjugated
Storage:	Store the antibody undiluted at 2-8°C for one month or (in aliquots) at -20°C for longer. Avoid repeated freezing and thawing.
Stability:	Shelf life: one year from despatch.
Gene Name:	anthrax toxin receptor 1
Database Link:	<a href="#">Entrez Gene 84168 Human Q9H6X2</a>



[View online »](#)

**Background:**

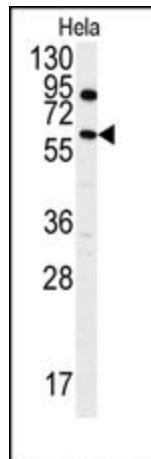
ANTXR1 is a type I transmembrane protein and is a tumor-specific endothelial marker that has been implicated in colorectal cancer. This protein has been shown to also be a docking protein or receptor for Bacillus anthracis toxin, the causative agent of the disease, anthrax. The binding of the protective antigen (PA) component, of the tripartite anthrax toxin, to this receptor protein mediates delivery of toxin components to the cytosol of cells. Once inside the cell, the other two components of anthrax toxin, edema factor (EF) and lethal factor (LF) disrupt normal cellular processes.

**Synonyms:**

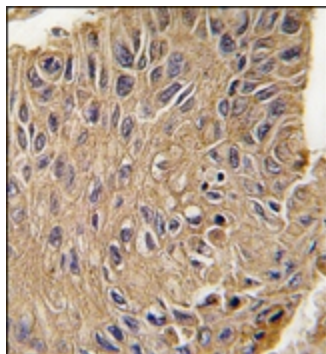
ATR, TEM8

**Note:**

Calculated Molecular Weight: 62789 Da

**Product images:**

Western blot analysis: ANTXR1 Antibody staining of HeLa cell line lysates at 1/60 dilution (35 ug/lane).



Immunohistochemistry: ANTXR1 Antibody staining of Formalin-Fixed, Paraffin-Embedded Human lung carcinoma tissue. This antibody which was peroxidase-conjugated to the secondary antibody, followed by DAB staining.