

Product datasheet for **AP14490PU-N**

STK38L (C-term) Rabbit Polyclonal Antibody

Product data:

Product Type:	Primary Antibodies
Applications:	WB
Recommended Dilution:	ELISA: 1/1,000. Western Blot: 1/250 - 1/500.
Reactivity:	Human
Host:	Rabbit
Isotype:	Ig
Clonality:	Polyclonal
Immunogen:	This antibody is generated from rabbits immunized with a KLH conjugated synthetic peptide selected from the C-terminal region of human STK38L.
Specificity:	This antibody reacts to STK38L.
Formulation:	PBS with 0.09% (W/V) sodium azide State: Purified State: Liquid purified Ig
Concentration:	lot specific
Purification:	Protein G column, eluted with high and low pH buffers and neutralized immediately, followed by dialysis against PBS
Conjugation:	Unconjugated
Storage:	Store the antibody undiluted at 2-8°C for one month or (in aliquots) at -20°C for longer. Avoid repeated freezing and thawing.
Stability:	Shelf life: one year from despatch.
Gene Name:	serine/threonine kinase 38 like
Database Link:	Entrez Gene 23012 Human Q9Y2H1



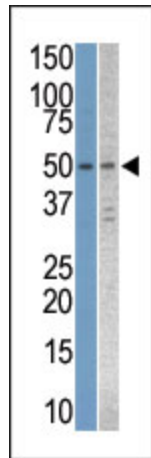
[View online »](#)

Background:

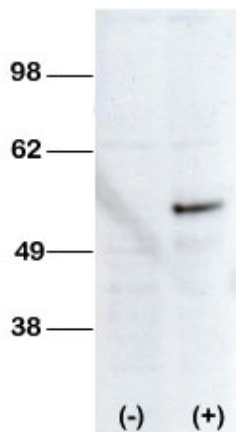
STK38L contains 12 protein kinase catalytic subdomains and a potential bipartite nuclear localization signal. Northern blot analysis revealed expression of a 3.9-kb transcript in all tissues tested, with the possible exception of adult brain. Highest expression was in peripheral blood leukocytes. Immunoblot and immunofluorescence microscopy demonstrated predominantly nuclear expression of a 55-kD protein.

Synonyms:

Serine/threonine-protein kinase 38-like, NDR2, KIAA0965

Product images:

The anti-STK38L Pab is used in Western blot to detect STK38L in Jurkat (left) and T47D (right) cell line lysates.



Western blot analysis of anti-STK38L Pab transiently transfected HEK-293 cell line lysate (1ug/lane). STK38L pab (arrow) was detected using the purified Pab (1:1500 dilution)