

Product datasheet for **AP14486PU-N**

YES1 (N-term) Rabbit Polyclonal Antibody

Product data:

Product Type:	Primary Antibodies
Applications:	IHC, WB
Recommended Dilution:	ELISA: 1/1,000. Western blotting: 1/100 - 1/500. Immunohistochemistry: 1/50 - 1/100.
Reactivity:	Human, Mouse
Host:	Rabbit
Isotype:	Ig
Clonality:	Polyclonal
Immunogen:	This antibody is generated from rabbits immunized with a KLH conjugated synthetic peptide selected from the N-terminal region of human YES.
Specificity:	This antibody reacts to YES.
Formulation:	PBS with 0.09% (W/V) sodium azide State: Purified State: Liquid purified Ig
Concentration:	lot specific
Purification:	Protein G column, eluted with high and low pH buffers and neutralized immediately, followed by dialysis against PBS
Conjugation:	Unconjugated
Storage:	Store the antibody undiluted at 2-8°C for one month or (in aliquots) at -20°C for longer. Avoid repeated freezing and thawing.
Stability:	Shelf life: one year from despatch.
Gene Name:	YES proto-oncogene 1, Src family tyrosine kinase
Database Link:	Entrez Gene 7525 Human P07947



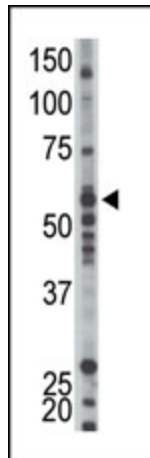
[View online »](#)

Background:

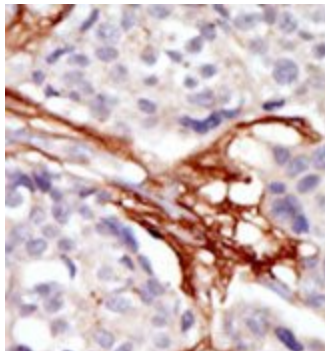
YES is a member of the Src family of non-receptor tyrosine kinases participating in a wide range of cellular signalling pathways. The gene that encodes YES is the cellular homolog of the Yamaguchi sarcoma virus oncogene. This gene lies in proximity to thymidylate synthase gene on chromosome 18, and a pseudogene of it has mapped to chromosome 22.

Synonyms:

YES, p61-Yes, c-Yes

Product images:

Western blot analysis of anti-YES Pab in mouse kidney tissue lysate. YES (arrow) was detected using purified Pab. Secondary HRP-anti-rabbit was used for signal visualization with chemiluminescence.



Formalin-fixed and paraffin-embedded human cancer tissue reacted with the primary antibody, which was peroxidase-conjugated to the secondary antibody, followed by AEC staining.