

Product datasheet for **AP14476PU-N**

SRC (N-term) Rabbit Polyclonal Antibody

Product data:

Product Type:	Primary Antibodies
Applications:	IHC, WB
Recommended Dilution:	ELISA: 1/1,000. Western blotting: 1/100 - 1/500. Immunohistochemistry: 1/50 - 1/100.
Reactivity:	Human, Mouse
Host:	Rabbit
Isotype:	Ig
Clonality:	Polyclonal
Immunogen:	This antibody is generated from rabbits immunized with a KLH conjugated synthetic peptide selected from the N-terminal region of human SRC.
Specificity:	This antibody reacts to SRC.
Formulation:	PBS with 0.09% (W/V) sodium azide State: Purified State: Liquid purified Ig
Concentration:	lot specific
Purification:	Protein G column, eluted with high and low pH buffers and neutralized immediately, followed by dialysis against PBS
Conjugation:	Unconjugated
Storage:	Store the antibody undiluted at 2-8°C for one month or (in aliquots) at -20°C for longer. Avoid repeated freezing and thawing.
Stability:	Shelf life: one year from despatch.
Gene Name:	SRC proto-oncogene, non-receptor tyrosine kinase
Database Link:	Entrez Gene 6714 Human P12931

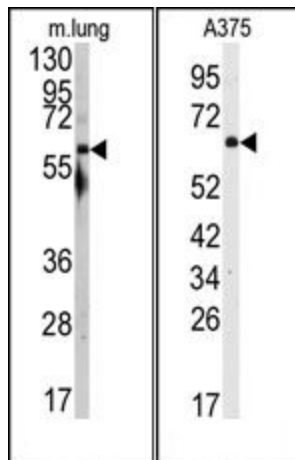
[View online »](#)

Background:

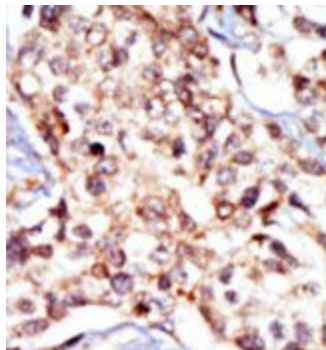
The gene for SRC is highly similar to the v-src gene of Rous sarcoma virus. This proto-oncogene may play a role in the regulation of embryonic development and cell growth. SRC, the protein encoded by this gene, is a tyrosine-protein kinase whose activity can be inhibited by phosphorylation by c-SRC kinase. Mutations in SRC could be involved in the malignant progression of colon cancer.

Synonyms:

c-Src, pp60c-src

Product images:


(LEFT)Western blot analysis of anti-SRC Antibody (N-term) in mouse lung tissue lysates (35ug/lane). SRC (arrow) was detected using the purified Pab. (RIGHT)Western blot analysis of anti-SRC Antibody (N-term) in A375 cell line lysates (35ug/lane). SRC (arrow) was detected using the purified Pab.



Formalin-fixed and paraffin-embedded human cancer tissue reacted with the primary antibody, which was peroxidase-conjugated to the secondary antibody, followed by DAB staining.