

Product datasheet for **AP14469PU-N**

ITK Rabbit Polyclonal Antibody

Product data:

Product Type:	Primary Antibodies
Applications:	WB
Recommended Dilution:	ELISA: 1/1,000. Western blotting: 1/100 - 1/500. Flow cytometry.
Reactivity:	Human
Host:	Rabbit
Isotype:	Ig
Clonality:	Polyclonal
Immunogen:	This antibody is generated from rabbits immunized with a KLH conjugated synthetic peptide selected from the center region of human ITK.
Specificity:	This antibody reacts to ITK.
Formulation:	PBS with 0.09% (W/V) sodium azide State: Purified State: Liquid purified Ig
Concentration:	lot specific
Purification:	Protein G column, eluted with high and low pH buffers and neutralized immediately, followed by dialysis against PBS
Conjugation:	Unconjugated
Storage:	Store the antibody undiluted at 2-8°C for one month or (in aliquots) at -20°C for longer. Avoid repeated freezing and thawing.
Stability:	Shelf life: one year from despatch.
Gene Name:	IL2 inducible T-cell kinase
Database Link:	Entrez Gene 3702 Human Q08881
Background:	ITK is an intracellular tyrosine kinase expressed in T-cells. The protein contains both SH2 and SH3 domains which are often found in intracellular kinases. It is thought to play a role in T-cell proliferation and differentiation.



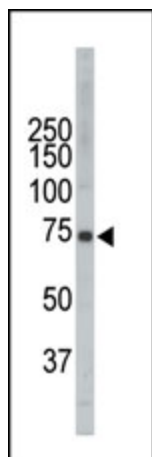
[View online »](#)

Synonyms: EMT, LYK

Protein Families: Druggable Genome, Protein Kinase

Protein Pathways: Chemokine signaling pathway, Leukocyte transendothelial migration, T cell receptor signaling pathway

Product images:



The anti-ITK Pab is used in Western blot to detect ITK in CEM cell lysate.