

## Product datasheet for **AP14422PU-N**

### **RYK (C-term) Rabbit Polyclonal Antibody**

#### **Product data:**

<b>Product Type:</b>	Primary Antibodies
<b>Applications:</b>	IHC, WB
<b>Recommended Dilution:</b>	ELISA: 1/1,000. Western blotting: 1/100 - 1/500. Immunohistochemistry: 1/50 - 1/100.
<b>Reactivity:</b>	Human
<b>Host:</b>	Rabbit
<b>Isotype:</b>	Ig
<b>Clonality:</b>	Polyclonal
<b>Immunogen:</b>	This antibody is generated from rabbits immunized with a KLH conjugated synthetic peptide selected from the C-terminal region of human RYK.
<b>Specificity:</b>	This antibody reacts to RYK.
<b>Formulation:</b>	PBS with 0.09% (W/V) sodium azide State: Purified State: Liquid purified Ig
<b>Concentration:</b>	lot specific
<b>Purification:</b>	Protein G column, eluted with high and low pH buffers and neutralized immediately, followed by dialysis against PBS
<b>Conjugation:</b>	Unconjugated
<b>Storage:</b>	Store the antibody undiluted at 2-8°C for one month or (in aliquots) at -20°C for longer. Avoid repeated freezing and thawing.
<b>Stability:</b>	Shelf life: one year from despatch.
<b>Gene Name:</b>	receptor-like tyrosine kinase
<b>Database Link:</b>	<a href="#">Entrez Gene 6259 Human P34925</a>



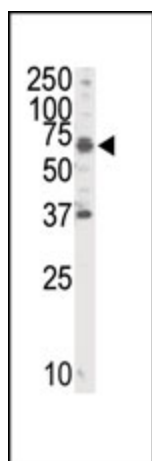
[View online »](#)

**Background:**

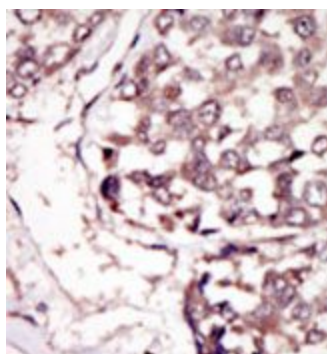
RYK is an atypical member of the family of growth factor receptor protein tyrosine kinases, differing from other members at a number of conserved residues in the activation and nucleotide binding domains. This gene product belongs to a subfamily whose members do not appear to be regulated by phosphorylation in the activation segment. It has been suggested that mediation of biological activity by recruitment of a signaling-competent auxiliary protein may occur through an as yet uncharacterized mechanism. A nine nucleotide insertion in some transcripts results in the SLG variant. It is not established whether this is a product of alternative splicing or a second gene, since evidence for a second gene or pseudogene on chromosome 17 exists.

**Synonyms:**

JTK5A

**Product images:**

Western blot analysis of anti-RYK Pab in Jurkat cell lysate. RYK (Arrow) was detected using purified Pab. Secondary HRP-anti-rabbit was used for signal visualization with chemiluminescence.



Formalin-fixed and paraffin-embedded human cancer tissue reacted with the primary antibody, which was peroxidase-conjugated to the secondary antibody, followed by DAB staining.