

## Product datasheet for **AP14411PU-N**

### RET (C-term) Rabbit Polyclonal Antibody

#### Product data:

Product Type:	Primary Antibodies
Applications:	IHC, WB
Recommended Dilution:	ELISA: 1/1,000. Immunohistochemistry: 1/50 - 1/100. Western Blot.
Reactivity:	Human
Host:	Rabbit
Isotype:	Ig
Clonality:	Polyclonal
Immunogen:	This antibody is generated from rabbits immunized with a KLH conjugated synthetic peptide selected from the C-terminal region of human RET.
Specificity:	This antibody reacts to RET.
Formulation:	PBS with 0.09% (W/V) sodium azide State: Purified State: Liquid purified Ig
Concentration:	lot specific
Purification:	Protein G column, eluted with high and low pH buffers and neutralized immediately, followed by dialysis against PBS
Conjugation:	Unconjugated
Storage:	Store the antibody undiluted at 2-8°C for one month or (in aliquots) at -20°C for longer. Avoid repeated freezing and thawing.
Stability:	Shelf life: one year from despatch.
Gene Name:	ret proto-oncogene
Database Link:	<a href="#">Entrez Gene 5979 Human P07949</a>



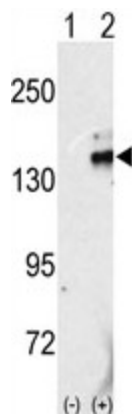
[View online »](#)

**Background:**

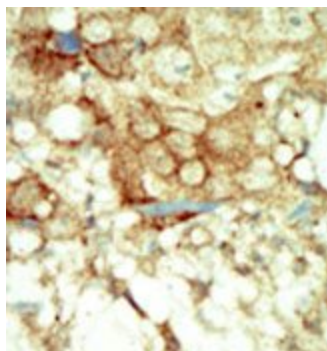
RET, a member of the cadherin superfamily, is one of the receptor tyrosine kinases, which are cell-surface molecules that transduce signals for cell growth and differentiation. This protein plays a crucial role in neural crest development, and the gene can undergo oncogenic activation in vivo and in vitro by cytogenetic rearrangement. Mutations are associated with the disorders multiple endocrine neoplasia, type IIA, multiple endocrine neoplasia, type IIB, Hirschsprung disease, and medullary thyroid carcinoma.

**Synonyms:**

C-ret, CDHF12

**Product images:**


Western blot analysis of RET (arrow) using rabbit polyclonal RET Antibody (C-term). 293 cell lysates (2 ug/lane) either nontransfected (Lane 1) or transiently transfected with the RET gene (Lane 2).



Formalin-fixed and paraffin-embedded human cancer tissue reacted with the primary antibody, which was peroxidase-conjugated to the secondary antibody, followed by DAB staining.