

## Product datasheet for **AP14366PU-N**

### Integrin Linked Kinase (ILK) Rabbit Polyclonal Antibody

#### Product data:

Product Type:	Primary Antibodies
Applications:	IHC, WB
Recommended Dilution:	ELISA: 1/1,000. Western blotting: 1/50 - 1/100. Immunohistochemistry: 1/50 - 1/100.
Reactivity:	Human
Host:	Rabbit
Isotype:	Ig
Clonality:	Polyclonal
Immunogen:	This antibody is generated from rabbits immunized with a KLH conjugated synthetic peptide corresponding to amino acid residues surrounding S246 of human ILK1.
Specificity:	This antibody reacts to ILK.
Formulation:	PBS with 0.09% (W/V) sodium azide State: Aff - Purified State: Liquid purified Ig
Concentration:	lot specific
Purification:	Protein A column, followed by peptide affinity purification
Conjugation:	Unconjugated
Storage:	Store the antibody undiluted at 2-8°C for one month or (in aliquots) at -20°C for longer. Avoid repeated freezing and thawing.
Stability:	Shelf life: one year from despatch.
Gene Name:	integrin linked kinase
Database Link:	<a href="#">Entrez Gene 3611 Human Q13418</a>



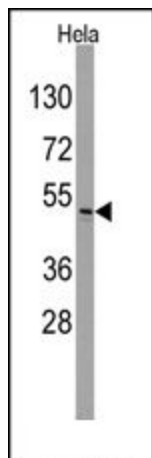
[View online »](#)

**Background:**

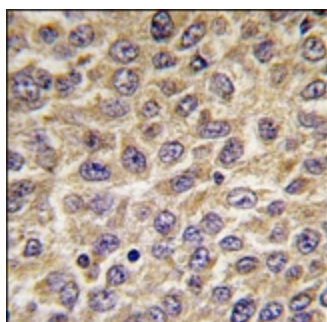
Transduction of extracellular matrix signals through integrins influences intracellular and extracellular functions, and appears to require interaction of integrin cytoplasmic domains with cellular proteins. Integrin-linked kinase (ILK), interacts with the cytoplasmic domain of beta-1 integrin. ILK is a serine/threonine protein kinase with 4 ankyrin-like repeats, which associates with the cytoplasmic domain of beta integrins and acts as a proximal receptor kinase regulating integrin-mediated signal transduction.

**Synonyms:**

ILK-1, ILK-2, p59ILK, ILK, ILK1, ILK2

**Product images:**

Western blot analysis of anti-ILK Antibody in HeLa cell line lysates (35ug/lane). ILK (arrow) was detected using the purified Pab (1:60 dilution).



Formalin-fixed and paraffin-embedded human hepatocarcinoma tissue reacted with ILK Antibody, which was peroxidase-conjugated to the secondary antibody, followed by DAB staining.