

Product datasheet for **AP14350PU-N**

VEGF Receptor 2 (KDR) (C-term) Rabbit Polyclonal Antibody

Product data:

Product Type:	Primary Antibodies
Applications:	FC, IF, IHC, WB
Recommended Dilution:	ELISA: 1/1,000. Western blotting: 1/1000. Immunohistochemistry on Paraffin Sections: 1/50-1/100. Flow Cytometry: 1/10-1/50. Immunofluorescence: 1/10-1/50.
Reactivity:	Human
Host:	Rabbit
Isotype:	Ig
Clonality:	Polyclonal
Immunogen:	KLH conjugated synthetic peptide between 1326-1356 amino acids from the C-terminal region of human VEGFR2 (FLK1/KDR).
Specificity:	This antibody reacts to VEGFR2.
Formulation:	PBS with 0.09% (W/V) sodium azide State: Purified State: Liquid purified Ig fraction
Concentration:	lot specific
Purification:	Saturated Ammonium Sulfate (SAS) precipitation followed by dialysis against PBS
Conjugation:	Unconjugated
Storage:	Store the antibody undiluted at 2-8°C for one month or (in aliquots) at -20°C for longer. Avoid repeated freezing and thawing.
Stability:	Shelf life: one year from despatch.
Gene Name:	kinase insert domain receptor
Database Link:	Entrez Gene 3791 Human P35968

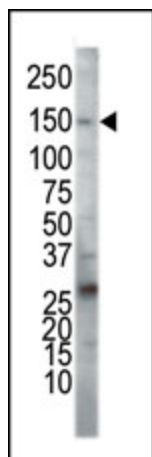


[View online »](#)

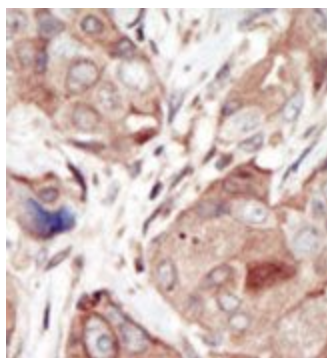
Background: KDR (FLK1) is a receptor for VEGF or VEGFC. This protein has a tyrosine-protein kinase activity. The VEGF-kinase ligand/receptor signaling system plays a key role in vascular development and regulation of vascular permeability.

Synonyms: VEGFR2, FLK1, KDR, VEGF Receptor 2

Product images:



Western blot analysis of anti-KDR/FLK1 Pab in HeLa cell lysate. KDR (VEGFR2) (arrow) was detected using purified Pab. Secondary HRP-anti-rabbit was used for signal visualization with chemiluminescence.



Formalin-fixed and paraffin-embedded human cancer tissue reacted with the primary antibody, which was peroxidase-conjugated to the secondary antibody, followed by DAB staining.