

Product datasheet for **AP14347PU-N**

Igfbp3 Rabbit Polyclonal Antibody

Product data:

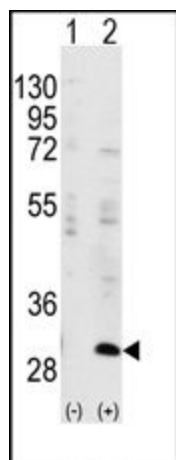
| | |
|-----------------------|--------------------------------------------------------------------------------------------------------------------------------------------------------------------------------------------------------------------------------------------------------------------------------------------------------------------------------------------------------------------------------------------------------------------------------------------|
| Product Type: | Primary Antibodies |
| Applications: | IHC, WB |
| Recommended Dilution: | ELISA: 1/1,000. Western Blot: 1/50 - 1/100. Immunohistochemistry: 1/10 - 1/50. |
| Reactivity: | Human |
| Host: | Rabbit |
| Isotype: | Ig |
| Clonality: | Polyclonal |
| Immunogen: | This antibody is generated from rabbits immunized with a KLH conjugated synthetic peptide corresponding to amino acid residues surrounding S183 of human IGFBP3. |
| Specificity: | This antibody reacts to IGFBP3. |
| Formulation: | PBS with 0.09% (W/V) sodium azide State: Aff - Purified State: Liquid purified Ig |
| Concentration: | lot specific |
| Purification: | Protein A column, followed by peptide affinity purification |
| Conjugation: | Unconjugated |
| Storage: | Store the antibody undiluted at 2-8°C for one month or (in aliquots) at -20°C for longer. Avoid repeated freezing and thawing. |
| Stability: | Shelf life: one year from despatch. |
| Gene Name: | insulin-like growth factor binding protein 3 |
| Database Link: | P15473 |
| Background: | IGFBP3 is a member of the insulin-like growth factor binding protein (IGFBP) family with an IGFBP domain and a thyroglobulin type-I domain. This protein forms a ternary complex with insulin-like growth factor acid-labile subunit (IGFALS) and either insulin-like growth factor (IGF) I or II. In this form, it circulates in the plasma, prolonging the half-life of IGFs and altering their interaction with cell surface receptors. |



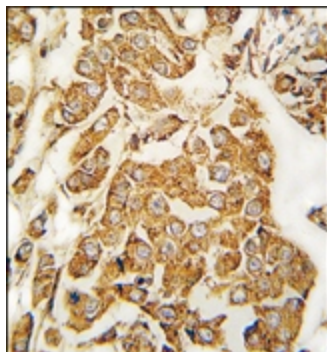
[View online »](#)

Synonyms: IGFBP-3, IGF-BP3, IBP3, Insulin-like growth factor-binding protein 3, IGF-binding protein 3, IBP-3

Product images:



Western blot analysis of IGFBP3 (arrow) using rabbit polyclonal IGFBP3 Antibody. 293 cell lysates (2 ug/lane) either nontransfected (Lane 1) or transiently transfected with IGFBP gene (Lane 2)



Formalin-fixed and paraffin-embedded human breast carcinoma tissue reacted with IGFBP3 Antibody, which was peroxidase-conjugated to the secondary antibody, followed by DAB staining.