

## Product datasheet for **AP14326PU-N**

### Her2 (ERBB2) Rabbit Polyclonal Antibody

#### Product data:

Product Type:	Primary Antibodies
Applications:	IHC, WB
Recommended Dilution:	ELISA: 1/1,000. Western blotting: 1/50 - 1/100.
Reactivity:	Human
Host:	Rabbit
Isotype:	Ig
Clonality:	Polyclonal
Immunogen:	This antibody is generated from rabbits immunized with a KLH conjugated synthetic peptide corresponding to amino acid residues surrounding Y1248 of human ERBB2.
Specificity:	This antibody reacts to ERBB2.
Formulation:	PBS with 0.09% (W/V) sodium azide State: Aff - Purified State: Liquid purified Ig
Concentration:	lot specific
Purification:	Protein A column, followed by peptide affinity purification
Conjugation:	Unconjugated
Storage:	Store the antibody undiluted at 2-8°C for one month or (in aliquots) at -20°C for longer. Avoid repeated freezing and thawing.
Stability:	Shelf life: one year from despatch.
Gene Name:	erb-b2 receptor tyrosine kinase 2
Database Link:	<a href="#">Entrez Gene 2064 Human P04626</a>



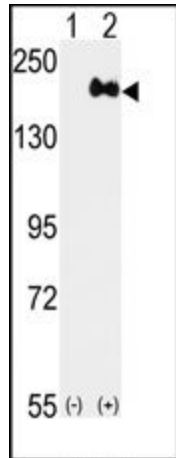
[View online »](#)

**Background:**

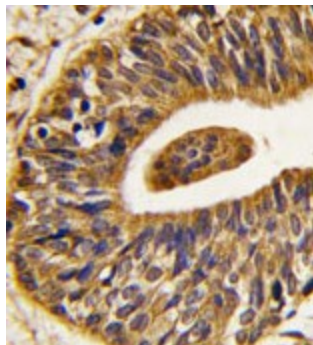
ErbB2, a member of the EGF receptor family, is an essential component of a neuregulin-receptor complex, although neuregulins do not interact with it alone. GP30 is a potential ligand for this receptor. This protein is not activated by EGF, TGF- $\alpha$  and amphiregulin. ErbB2 potentially forms a heterodimer with each of the other ERBB receptors. An interaction with PRKCABP has been suggested. Ligand-binding to this Type I membrane protein may increase phosphorylation on tyrosine residues.

**Synonyms:**

HER-2, NEU, p185erbB2, NGL, c-erbB-2, MNL19

**Product images:**


Western blot analysis of ERBB2 (arrow) using rabbit polyclonal ERBB2 Antibody. 293 cell lysates (2 ug/lane) either nontransfected (Lane 1) or transiently transfected with the ERBB2 gene (Lane 2)



Formalin-fixed and paraffin-embedded human prostate carcinoma tissue reacted with Phospho-ErbB2-pY1248.ctrl antibody, which was peroxidase-conjugated to the secondary antibody, followed by DAB staining.