

Product datasheet for **AP14292PU-N**

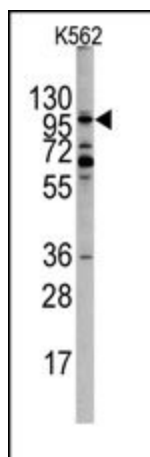
EPHA10 (N-term) Rabbit Polyclonal Antibody

Product data:

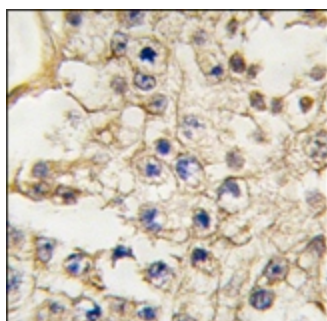
Product Type:	Primary Antibodies
Applications:	IHC, WB
Recommended Dilution:	ELISA: 1/1,000. Western blotting: 1/50 - 1/100. Immunohistochemistry: 1/10 - 1/50.
Reactivity:	Human
Host:	Rabbit
Isotype:	Ig
Clonality:	Polyclonal
Immunogen:	This antibody is generated from rabbits immunized with a KLH conjugated synthetic peptide selected from the N-terminal region of human EPHA10.
Specificity:	This antibody reacts to EPHA10.
Formulation:	PBS with 0.09% (W/V) sodium azide State: Purified State: Liquid purified Ig
Concentration:	lot specific
Purification:	Protein A column, eluted with high and low pH buffers and neutralized immediately, followed by dialysis against PBS
Conjugation:	Unconjugated
Storage:	Store the antibody undiluted at 2-8°C for one month or (in aliquots) at -20°C for longer. Avoid repeated freezing and thawing.
Stability:	Shelf life: one year from despatch.
Gene Name:	EPH receptor A10
Database Link:	Entrez Gene 284656 Human Q5JZY3
Background:	EPHA10 is a receptor for members of the ephrin-A family. It binds to EFNA3, EFNA4 and EFNA5.
Synonyms:	Ephrin type-A receptor 10



[View online »](#)

Product images:

Western blot analysis of EPHA10 Antibody (N-term) in K562 cell line lysates (35ug/lane). EPHA10 (arrow) was detected using the purified Pab (1:60 dilution).



Formalin-fixed and paraffin-embedded human testis tissue reacted with EPHA10 antibody (N-term), which was peroxidase-conjugated to the secondary antibody, followed by DAB staining.