

## Product datasheet for **AP14286PU-N**

### EphA6 Rabbit Polyclonal Antibody

#### Product data:

Product Type:	Primary Antibodies
Applications:	WB
Recommended Dilution:	ELISA: 1/1,000. Western blotting: 1/50 - 1/100.
Reactivity:	Human
Host:	Rabbit
Isotype:	Ig
Clonality:	Polyclonal
Immunogen:	This antibody is generated from rabbits immunized with his fusion recombinant protein of human EPHA6.
Specificity:	This antibody reacts to EphA6.
Formulation:	PBS with 0.09% (W/V) sodium azide State: Purified State: Liquid purified Ig
Concentration:	lot specific
Purification:	Prepared by Saturated Ammonium Sulfate (SAS) precipitation followed by dialysis against PBS
Conjugation:	Unconjugated
Storage:	Store the antibody undiluted at 2-8°C for one month or (in aliquots) at -20°C for longer. Avoid repeated freezing and thawing.
Stability:	Shelf life: one year from despatch.
Database Link:	<a href="#">Q62413</a>



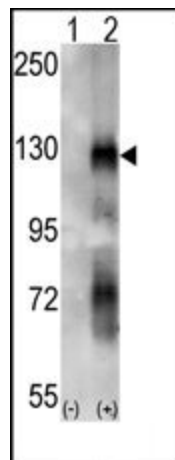
[View online »](#)

**Background:**

Protein kinases are enzymes that transfer a phosphate group from a phosphate donor, generally the  $\gamma$  phosphate of ATP, onto an acceptor amino acid in a substrate protein. By this basic mechanism, protein kinases mediate most of the signal transduction in eukaryotic cells, regulating cellular metabolism, transcription, cell cycle progression, cytoskeletal rearrangement and cell movement, apoptosis, and differentiation. With more than 500 gene products, the protein kinase family is one of the largest families of proteins in eukaryotes. The family has been classified in 8 major groups based on sequence comparison of their tyrosine (PTK) or serine/threonine (STK) kinase catalytic domains. The tyrosine kinase (TK) group is mainly involved in the regulation of cell-cell interactions such as differentiation, adhesion, motility and death. There are currently about 90 TK genes sequenced, 58 are of receptor protein TK (e.g. EGFR, EPH, FGFR, PDGFR, TRK, and VEGFR families), and 32 of cytosolic TK (e.g. ABL, FAK, JAK, and SRC families).

**Synonyms:**

Ephrin type-A receptor 6, EPH homology kinase 2, Ehk-2, Ehk2

**Product images:**

Western blot analysis of EphA6 (arrow) using rabbit polyclonal EphA6 Antibody. 293 cell lysates (2 ug/lane) either nontransfected (Lane 1) or transiently transfected with the EPHA6 gene (Lane 2)