

## Product datasheet for **AP14268PU-N**

### AXL (N-term) Rabbit Polyclonal Antibody

#### Product data:

Product Type:	Primary Antibodies
Applications:	WB
Recommended Dilution:	ELISA: 1/1,000. Western blotting: 1/100 - 1/500. Immunohistochemistry: 1/50 - 1/100.
Reactivity:	Human
Host:	Rabbit
Isotype:	Ig
Clonality:	Polyclonal
Immunogen:	This antibody is generated from rabbits immunized with a KLH conjugated synthetic peptide selected from the N-terminal region of human AXL.
Specificity:	This antibody reacts to AXL.
Formulation:	PBS with 0.09% (W/V) sodium azide State: Purified State: Liquid purified Ig
Concentration:	lot specific
Purification:	Protein G column, eluted with high and low pH buffers and neutralized immediately, followed by dialysis against PBS
Conjugation:	Unconjugated
Storage:	Store the antibody undiluted at 2-8°C for one month or (in aliquots) at -20°C for longer. Avoid repeated freezing and thawing.
Stability:	Shelf life: one year from despatch.
Gene Name:	AXL receptor tyrosine kinase
Database Link:	<a href="#">Entrez Gene 558 Human P30530</a>



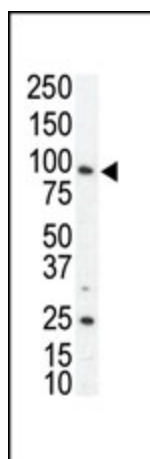
[View online »](#)

**Background:**

AXL, a member of the AXL/UFO subfamily of Tyr protein kinases, may function as a signal transducer between specific cell types of mesodermal origin. This Type I membrane protein has transforming potential in patients with chronic myeloproliferative disorder or chronic myelocytic leukemia. The protein contains 2 putative fibronectin type III domains and 2 putative immunoglobulin-like C2-type domains.

**Synonyms:**

JTK11; UFO

**Product images:**

Western blot analysis of anti-AXL N-term Pab in SKBR3 cell lysate. AXL (arrow) was detected using purified Pab. Secondary HRP-anti-rabbit was used for signal visualization with chemiluminescence.